

KEADBY 3 CARBON CAPTURE POWER STATION

A collaboration between **SSE Thermal** and **Equinor**

Document Ref: 10.9

Planning Inspectorate Ref: EN010114

The Keadby 3 (Carbon Capture Equipped Gas Fired Generating Station) Order

**Land at and in the vicinity of the Keadby Power Station site,
Trentside, Keadby, North Lincolnshire**

**Proposed Development Changes:
Environmental Statement (ES) Addendum
– Volume III (ES Figures)**

The Planning Act 2008

**The Infrastructure Planning (Environmental Impact Assessment)
Regulations 2017**

Applicant: Keadby Generation Limited

Date: May 2022

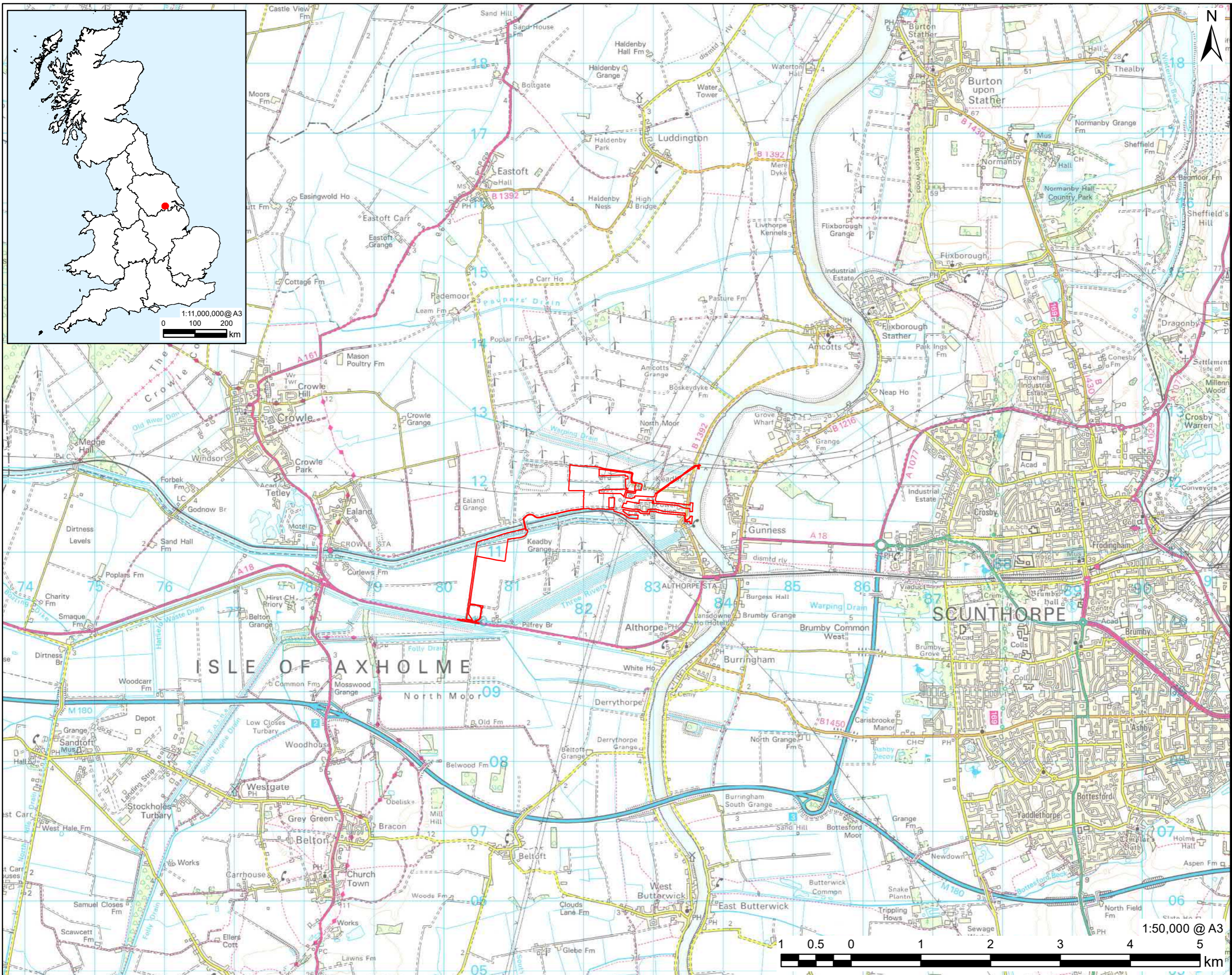
DOCUMENT HISTORY

Document Ref	10.9/ ES Addendum Volume III (ES Figures)
Revision	VP3.0 -Change Request
Document Owner	AECOM

ES VOLUME III (FIGURES) CONTENTS

Document Ref. 6.4.1	Figure 1.1 - Site Location Plan – Rev 03
Document Ref. 6.4.2	Figure 3.1 - The Order Limits – Rev 03
Document Ref. 6.4.3	Figure 3.2 - Aerial Photo of the Order Limits – Rev 03
Document Ref. 6.4.4	Figure 3.3 - Indicative Work Areas Referred to in the Environmental Statement – Rev 03
Document Ref. 6.4.7	Figure 4.1a - Indicative Layout Proposed PCC Site – Single Absorber Layout Rev 02 Figure 4.1b – Indicative Layout Proposed PCC Site – Twin Absorber Layout - Rev 02
Document Ref. 6.4.8	Figure 5.1 - Construction Laydown Areas – Rev 02
Document Ref. 6.4.12	Figure 8.4 - Air Quality Operational Study Area – Modelled Buildings – Rev 03
Document Ref. 6.4.32	Figure 14.1 - Landscape Character Areas and Types – Rev 02
Document Ref. 6.4.33	Figure 14.2 – Topography – Rev 02
Document Ref. 6.4.34	Figure 14.3 - Landscape Context – Rev 02
Document Ref. 6.4.35	Figure 14.4 - Zone of Theoretical Visibility and Potential Viewpoint Locations - 105m Stack – Rev 02
Document Ref. 6.4.36	Figure 14.5 - Representative Viewpoints – Rev 02
Document Ref. 6.4.50	Figure 14.19 - Viewpoint 1 Photomontage - Chapel Lane West, Keadby – Rev 02
Document Ref. 6.4.51	Figure 14.20 - Viewpoint 2 Photomontage - Gate Keepers Residence Vazon Bridge, Keadby – Rev 02
Document Ref. 6.4.52	Figure 14.21 - Viewpoint 4 Photomontage - PRoW (KEAD9, KEAD10), North of Keadby – Rev 02
Document Ref. 6.4.53	Figure 14.22 - Viewpoint 5 Photomontage - PRoW (GUNN179) North-East Gunness – Rev 02
Document Ref. 6.4.54	Figure 14.23 - Viewpoint 6 Photomontage - Trunk Road, Keadby – Rev 02

Document Ref. 6.4.55	Figure 14.24 - Viewpoint 13 Photomontage - PROW (BELT30/ BELT34) Isle of Axholme – Rev 02
Document Ref. 6.4.59	Figure 19.1 - Long list of Developments Initially Considered for Cumulative Impact Assessment – Rev 03
Document Ref. 6.4.60	Figure 19.2 - Short list of Developments Considered in Cumulative Impact Assessment – Rev 03



PROJECT
The Keadby 3 (Carbon Capture Equipped Gas Fired Generating Station) Order

APPLICANT
Keadby Generation Limited

CONSULTANT
AECOM Limited
2 City Walk
Leeds
LS11 9AR
T: 0113 391 6800
www.aecom.com

LEGEND
The Order Limits



NOTES
Reproduced from Ordnance Survey digital map data © Crown copyright 2022. All rights reserved. Licence number 0100031673.

ISSUE PURPOSE
ENV STATEMENT ADDENDUM
PROJECT NUMBER
60625943
SHEET TITLE
Site Location Plan
SHEET NUMBER
Figure 1.1

CONSULTANT

AECOM Limited
2 City Walk
Leeds
LS11 9AR
T: 0113 391 6800
www.aecom.com

LEGEND

-  The Order Limits
-  Construction/Operational Access to Proposed Development Site

NOTES

Reproduced from Ordnance Survey digital map data © Crown copyright 2022. All rights reserved. Licence number 0100031673.

ISSUE PURPOSE

ENV STATEMENT ADDENDUM

PROJECT NUMBER

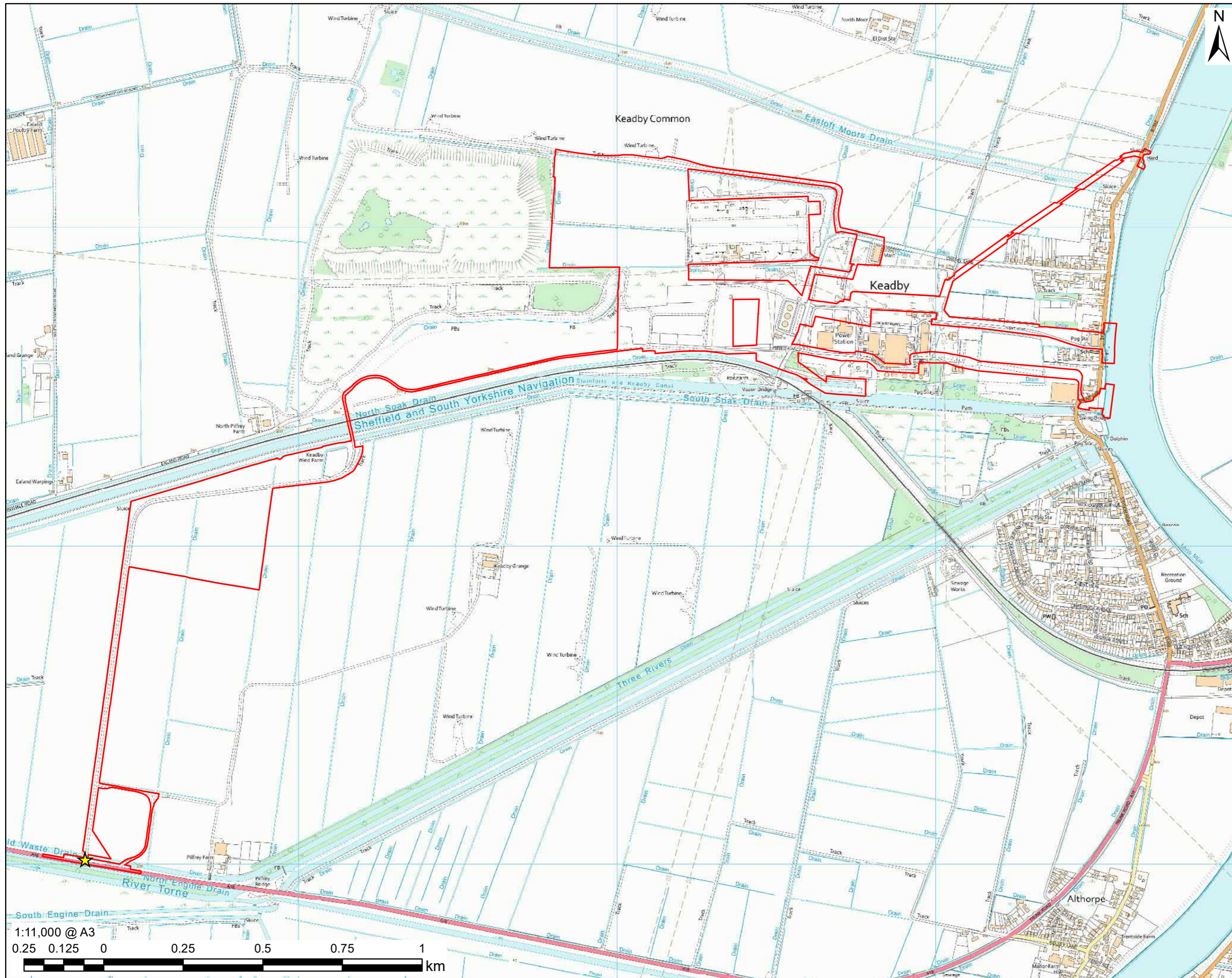
60625943





SHEET TITLE

The Order Limits

SHEET NUMBER

Figure 3.1



-  The Order Limits
-  Construction/Operational Access to Proposed Development Site
-  Proposed PCC Site
-  Outside of Order Limits - No Planned Development

NOTES

Reproduced from Ordnance Survey digital map data © Crown copyright 2022. All rights reserved. Licence number 0100031673. © Crown copyright and database rights 2022 OS 100019980. OS MasterMap Imagery Layer has been created using OS's own imagery and imagery from other suppliers. This data may contain imagery data sourced from Getmapping plc, imagery data sourced from UK Perspectives Limited and/or imagery data sourced from InfoTerra Limited.

ISSUE PURPOSE

ENV STATEMENT ADDENDUM

PROJECT NUMBER

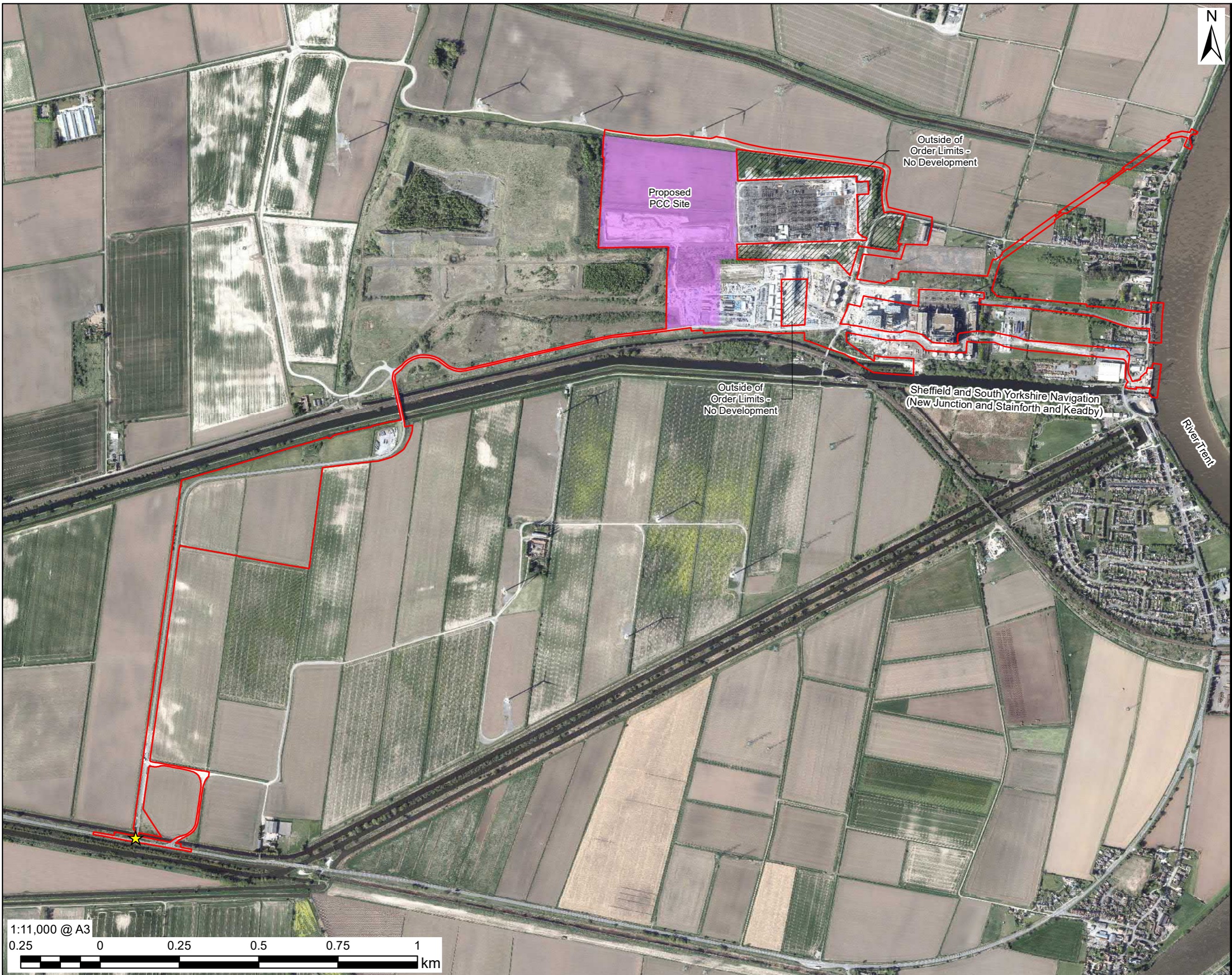
60625943

SHEET TITLE

Aerial Photo of The Order Limits

SHEET NUMBER

Figure 3.2



This drawing has been prepared for the use of AECOM's client. It may not be used, modified, reproduced or relied upon by third parties, except as agreed by AECOM or as required by law. AECOM accepts no responsibility, and disclaims any liability whatsoever, to any party that uses or relies on this drawing without AECOM's express written consent. Do not scale this document. All measurements must be obtained from the stated dimensions.

LEGEND

- The Order Limits
- A - Natural Gas Receiving Area
- B - Gas Turbine and Auxiliaries
- C - HRSG and Auxiliaries
- D - Steam Turbine and Auxiliaries
- E - Power Island Electrical Equipment
- F - Flue Gas Fans and Ducting
- G - Flue Gas Cooling
- H - Absorber
- I - Stripping and Reclaiming
- J - Storage and Consumables
- K - Compression and Dehydration
- L - National Grid CO2 AGI
- M - Cooling Towers
- N - Gate House, Security and Parking
- O - Administration, Control Room and Stores Buildings
- P - Raw Water Treatment
- Q - Surface Water Attenuation Pond
- Emergency Access and Egress

NOTES

Reproduced from Ordnance Survey digital map data © Crown copyright 2022. All rights reserved. Licence number 0100031673.

ISSUE PURPOSE

ENV STATEMENT ADDENDUM

PROJECT NUMBER

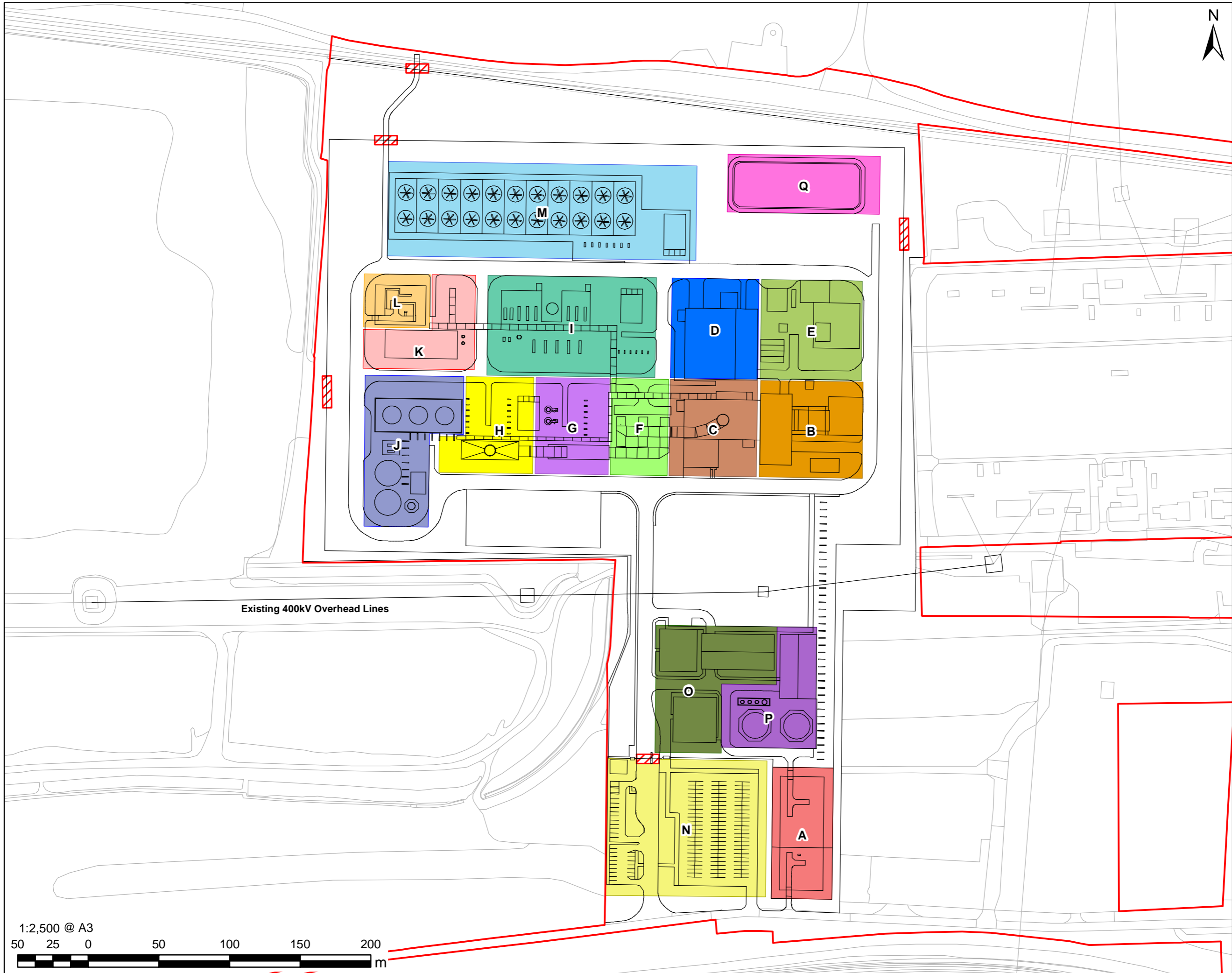
60625943

SHEET TITLE

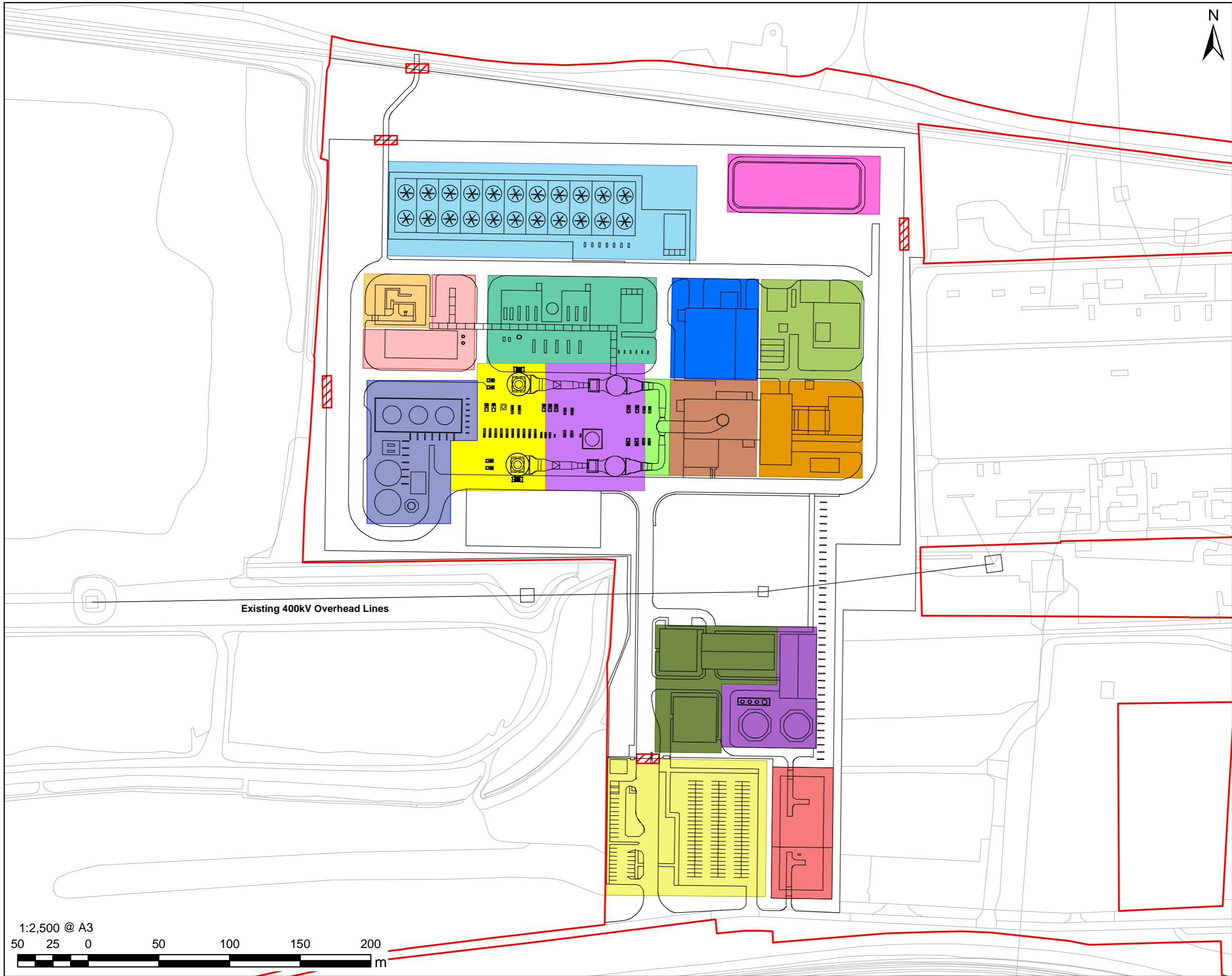
Indicative Layout
Proposed PCC Site:
Single Absorber Layout

SHEET NUMBER

Figure 4.1a



This drawing has been prepared for the use of AECOM's client. It may not be used, modified, reproduced or relied upon by third parties, except as agreed by AECOM or as required by law. AECOM accepts no responsibility, and denies any liability, whatsoever, to any party that uses or relies on this drawing without AECOM's express written consent. All measurements must be obtained from the stable dimensions.



AECOM

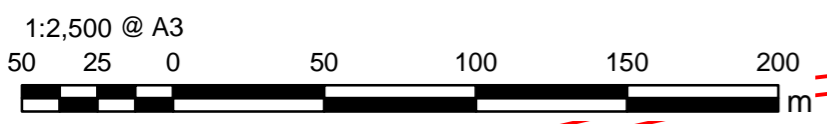
PROJECT
The Keadby 3 (Carbon Capture Equipped Gas Fired Generating Station) Order

APPLICANT
Keadby Generation Limited

CONSULTANT
AECOM Limited
2 City Walk
Leeds
LS11 9AR
T: 0113 391 6800
www.aecom.com

- LEGEND**
- The Order Limits
 - A - Natural Gas Receiving Area
 - B - Gas Turbine and Auxiliaries
 - C - HRSG and Auxiliaries
 - D - Steam Turbine and Auxiliaries
 - E - Power Island Electrical Equipment
 - F - Flue Gas Fans and Ducting
 - G - Flue Gas Cooling
 - H - Absorber
 - I - Stripping and Reclaiming
 - J - Storage and Consumables
 - K - Compression and Dehydration
 - L - National Grid CO2 AGI
 - M - Cooling Towers
 - N - Gate House, Security and Parking
 - O - Administration, Control Room and Stores Buildings
 - P - Raw Water Treatment
 - Q - Surface Water Attenuation Pond
 - Emergency Access and Egress

Existing 400kV Overhead Lines



NOTES
Reproduced from Ordnance Survey digital map data © Crown copyright 2022. All rights reserved. Licence number 0100031673.

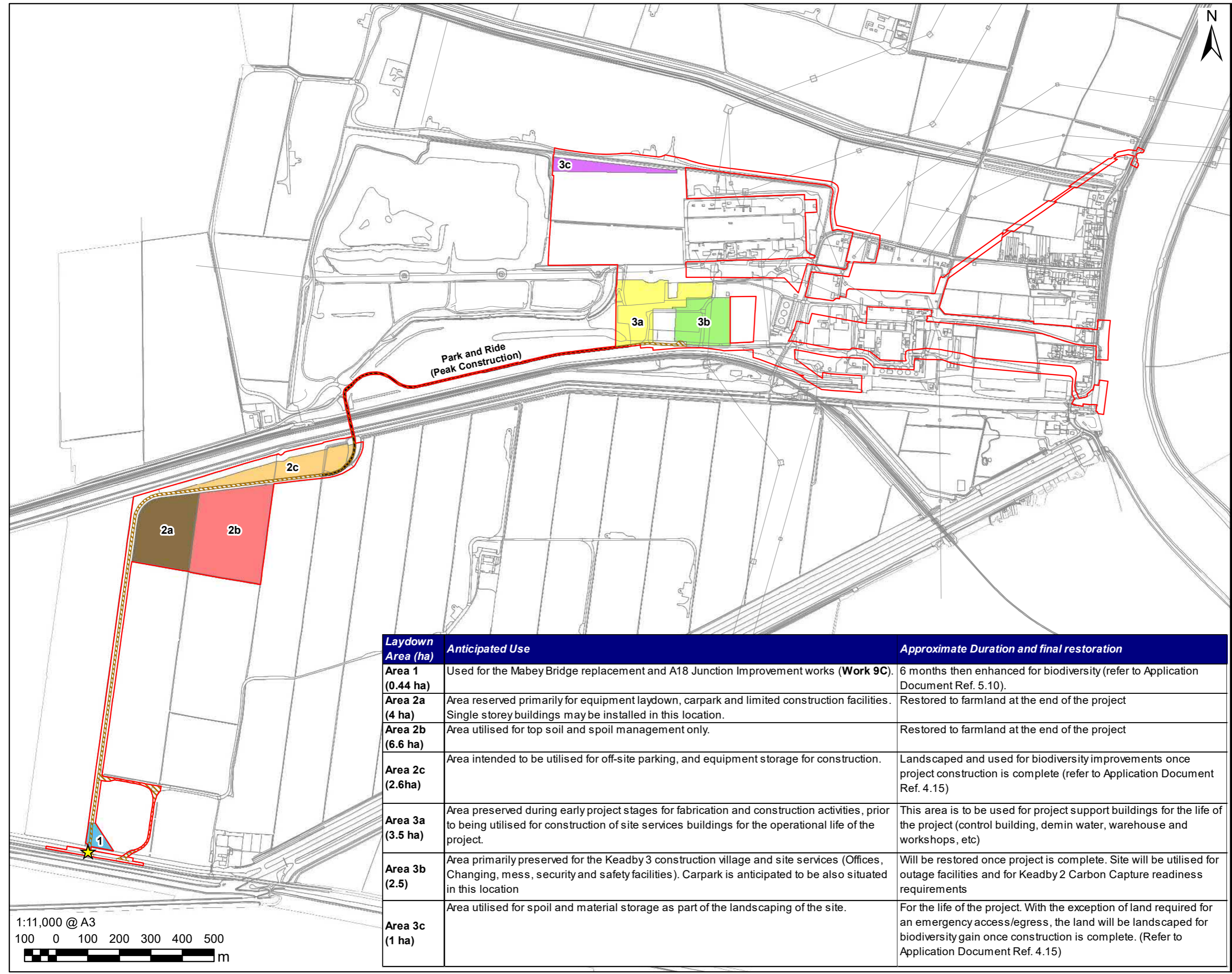
ISSUE PURPOSE
ENV STATEMENT ADDENDUM

PROJECT NUMBER
60625943

SHEET TITLE
Indicative Layout
Proposed PCC Site:
Twin Absorber Layout

SHEET NUMBER
Figure 4.1b

This drawing has been prepared for the use of AECOM's client. It may not be used, modified, reproduced or relied upon by third parties, except as agreed by AECOM or as required by law. AECOM accepts no responsibility, and denies any liability, whatsoever, to any party that uses or relies on this drawing without AECOM's express written consent. All measurements must be obtained from the stable dimensions.



LEGEND

- The Order Limits
- Indicative Park and Ride Route (Peak Construction)
- Temporary Access to the Temporary Construction and Laydown Area

Indicative Construction Laydown Areas

- Area 1
- Area 2a
- Area 2b
- Area 2c
- Area 3a
- Area 3b
- Area 3c

★ Construction/Operational Access to Proposed Development Site

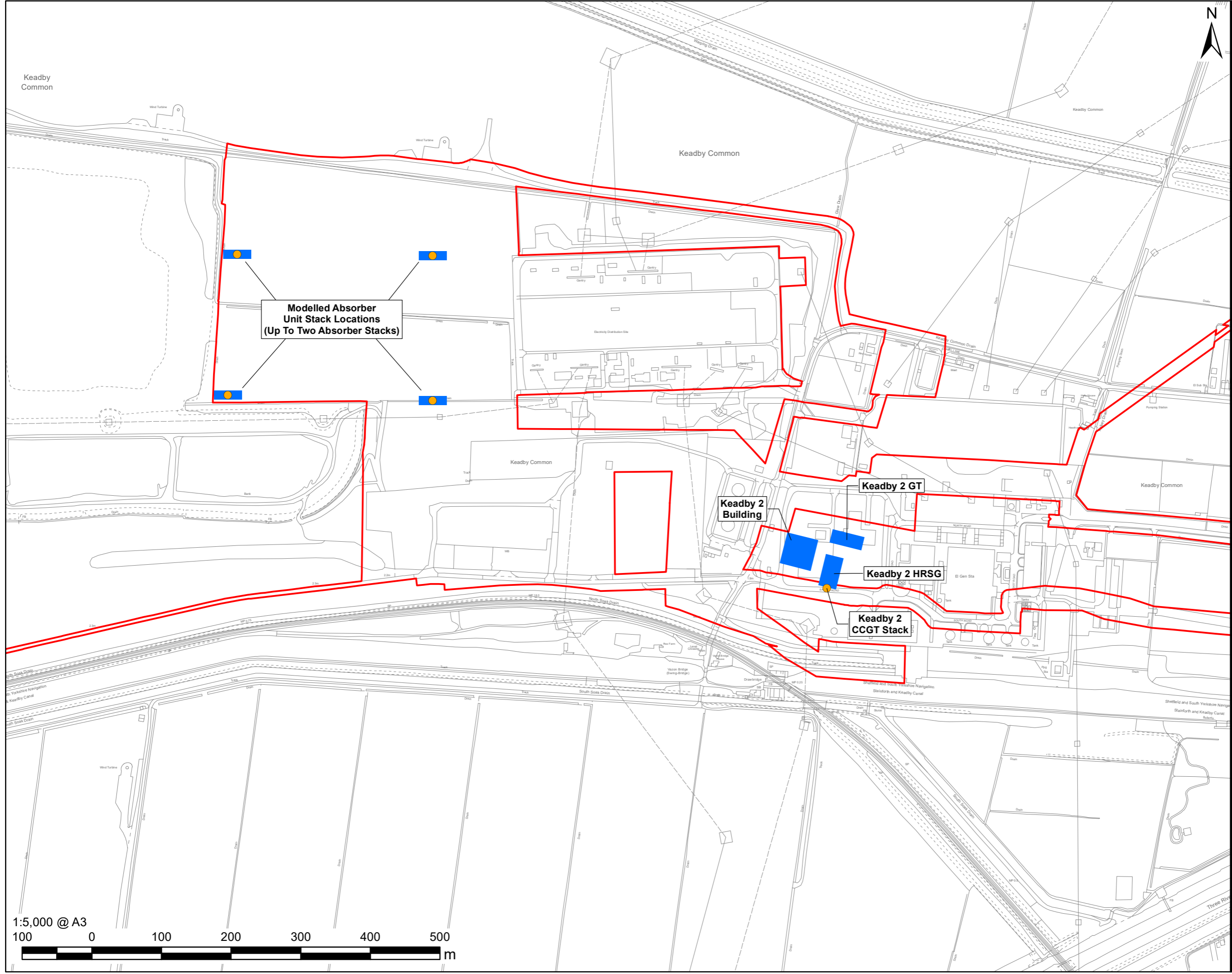
Laydown Area (ha)	Anticipated Use	Approximate Duration and final restoration
Area 1 (0.44 ha)	Used for the Mabey Bridge replacement and A18 Junction Improvement works (Work 9C).	6 months then enhanced for biodiversity (refer to Application Document Ref. 5.10).
Area 2a (4 ha)	Area reserved primarily for equipment laydown, carpark and limited construction facilities. Single storey buildings may be installed in this location.	Restored to farmland at the end of the project
Area 2b (6.6 ha)	Area utilised for top soil and spoil management only.	Restored to farmland at the end of the project
Area 2c (2.6ha)	Area intended to be utilised for off-site parking, and equipment storage for construction.	Landscaped and used for biodiversity improvements once project construction is complete (refer to Application Document Ref. 4.15)
Area 3a (3.5 ha)	Area preserved during early project stages for fabrication and construction activities, prior to being utilised for construction of site services buildings for the operational life of the project.	This area is to be used for project support buildings for the life of the project (control building, demin water, warehouse and workshops, etc)
Area 3b (2.5)	Area primarily preserved for the Keadby 3 construction village and site services (Offices, Changing, mess, security and safety facilities). Carpark is anticipated to be also situated in this location	Will be restored once project is complete. Site will be utilised for outage facilities and for Keadby 2 Carbon Capture readiness requirements
Area 3c (1 ha)	Area utilised for spoil and material storage as part of the landscaping of the site.	For the life of the project. With the exception of land required for an emergency access/egress, the land will be landscaped for biodiversity gain once construction is complete. (Refer to Application Document Ref. 4.15)

NOTES
Reproduced from Ordnance Survey digital map data © Crown copyright 2022. All rights reserved. Licence number 0100031673.

ISSUE PURPOSE
ENV STATEMENT ADDENDUM
PROJECT NUMBER
60625943
SHEET TITLE
Construction Laydown Areas

SHEET NUMBER
Figure 5.1

This drawing has been prepared for the use of AECOM's client. It may not be used, modified, reproduced or relied upon by third parties, except as agreed by AECOM or as required by law. AECOM accepts no responsibility, and disclaims any liability whatsoever, to any party that uses or relies on this drawing without AECOM's express written consent. Do not scale this document. All measurements must be obtained from the stated dimensions.



This drawing has been prepared for the use of AECOM's client. It may not be used, modified, reproduced or relied upon by third parties, except as agreed by AECOM or as required by law. AECOM accepts no responsibility, and disclaims any liability whatsoever, to any party that uses or relies on this drawing without AECOM's express written consent. Do not scale this document. All measurements must be obtained from the stated dimensions.

PROJECT

The Keadby 3 (Carbon Capture Equipped Gas Fired Generating Station) Order

APPLICANT
Keadby Generation Limited

CONSULTANT

AECOM Limited
2 City Walk
Leeds
LS11 9AR
T: 0113 391 6800
www.aecom.com

LEGEND

- The Order Limits
- 10km Study Area
- National Character Area Profile (Natural England)**
 - NCA Profile 39: Humberhead Levels
 - NCA Profile 45 Northern Lincolnshire Edge with Coversands
- North Lincolnshire Landscape Character Assessment and Guidelines (Estell Warren Landscape Architects, 1999)**
 - Trent Levels LCA
- Subdivided into the following LCTs:**
 - 1 Flat Drained Farmland LCT
 - 2 Flat Drained Treed Farmland LCT
 - 3 Flat Open Remote Farmland LCT
 - 4 Flat Wooded Farmland LCT
 - 5 Industrial Landscape LCT
 - 6 Open Island Farmland LCT
 - 7 Wooded Springline Farmland LCT
 - Lincolnshire Edge LCA
- Subdivided into the following LCTs:**
 - 8 Despoiled Landscape LCT
 - 9 Elevated Open Farmland LCT
 - 10 Elevated Wooded Farmland LCT
 - 11 Farmed Urban Fringe LCT
 - 12 Heathy Woodland LCT
 - 13 Industrial Landscape LCT
 - 14 Open Farmed Scarp Slope LCT
 - 15 Open Undulating Farmland LCT
 - 16 Steep Wooded Scarp Slope LCT
 - 17 Urban Areas LCT
 - 18 Wooded Scarp Slope LCT
 - 19 Wooded Undulating Farmland LCT
- Doncaster Landscape Character Assessment and Capacity Study (ECUS Ltd 2007)**
 - Thorne and Hatfield Peat Moorlands LCA
- East Riding of Yorkshire Council Landscape Assessment (AECOM, 2018)**
 - Drained Open Farmland LCT
 - Humber Banks LCT
- West Lindsey Landscape Character Assessment (Environment Resource Management, 1999)**
 - Laughton Woods LCA

NOTES

Reproduced from Ordnance Survey digital map data © Crown copyright 2022. All rights reserved. Licence number 0100031673. © Natural England material is reproduced with the permission of Natural England 2022. Landscape Character Areas and Types were digitised from PDFs supplied by North Lincolnshire, East Riding of Yorkshire, Doncaster and West Lindsey District Council. Digitised boundaries are high-level and indicative.

ISSUE PURPOSE

ENV STATEMENT ADDENDUM

PROJECT NUMBER

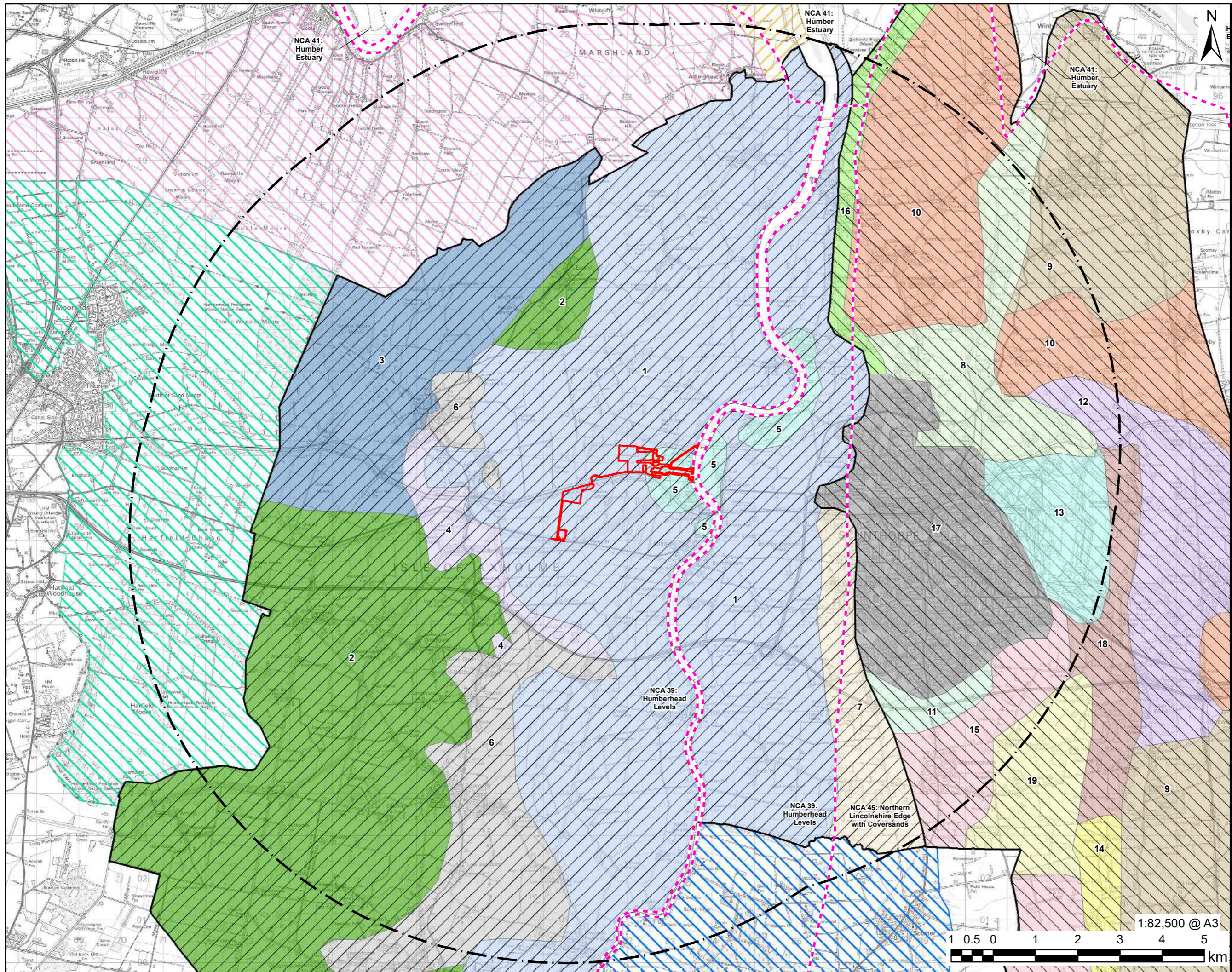
60625943

SHEET TITLE

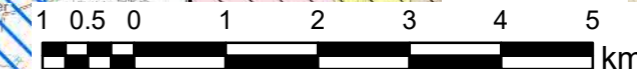
Landscape Character Areas and Types

SHEET NUMBER

Figure 14.1

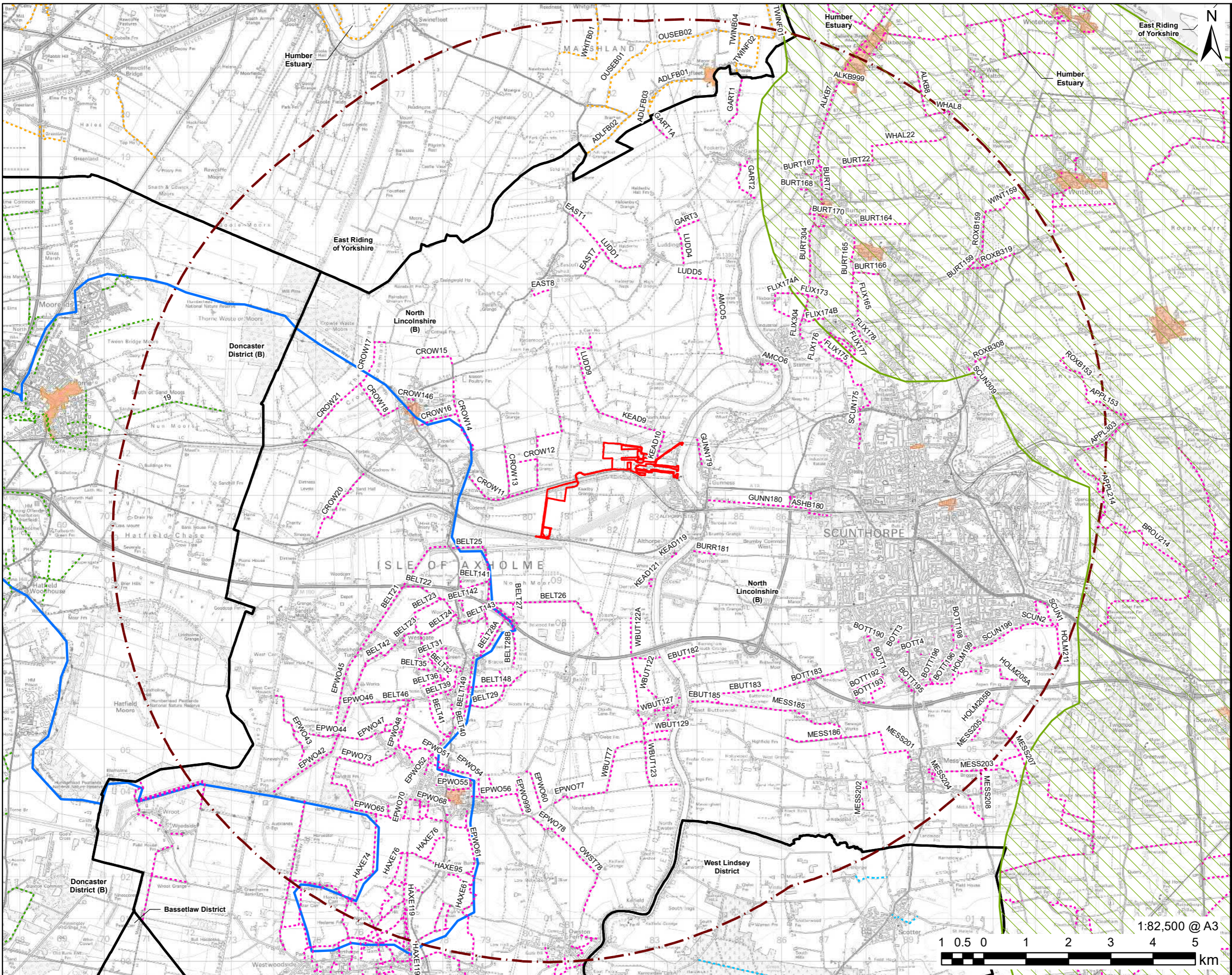


1:82,500 @ A3





This drawing has been prepared for the use of AECOM's client. It may not be used, modified, reproduced or relied upon by third parties, except as agreed by AECOM or as required by law. AECOM accepts no responsibility and disclaims any liability whatsoever, to any party that uses or relies on this drawing without AECOM's express written consent. Do not scale this document. All measurements must be obtained from the stated dimensions.



PROJECT
 The Keadby 3 (Carbon Capture Equipped Gas Fired Generating Station) Order

APPLICANT
 Keadby Generation Limited

CONSULTANT
 AECOM Limited
 2 City Walk
 Leeds
 LS11 9AR
 T: 0113 391 6800
 www.aecom.com

- LEGEND**
- The Order Limits
 - 10km Study Area
 - District Boundary
 - North Lincolnshire Public Right of Way
 - East Riding of Yorkshire Public Right of Way
 - Lincolnshire Public Right of Way
 - Doncaster Public Right of Way
 - Long Distance Peatlands Way
 - Conservation Area
 - Lincolnshire Wolds Area of Outstanding Natural Beauty (AONB) Proposed Extension

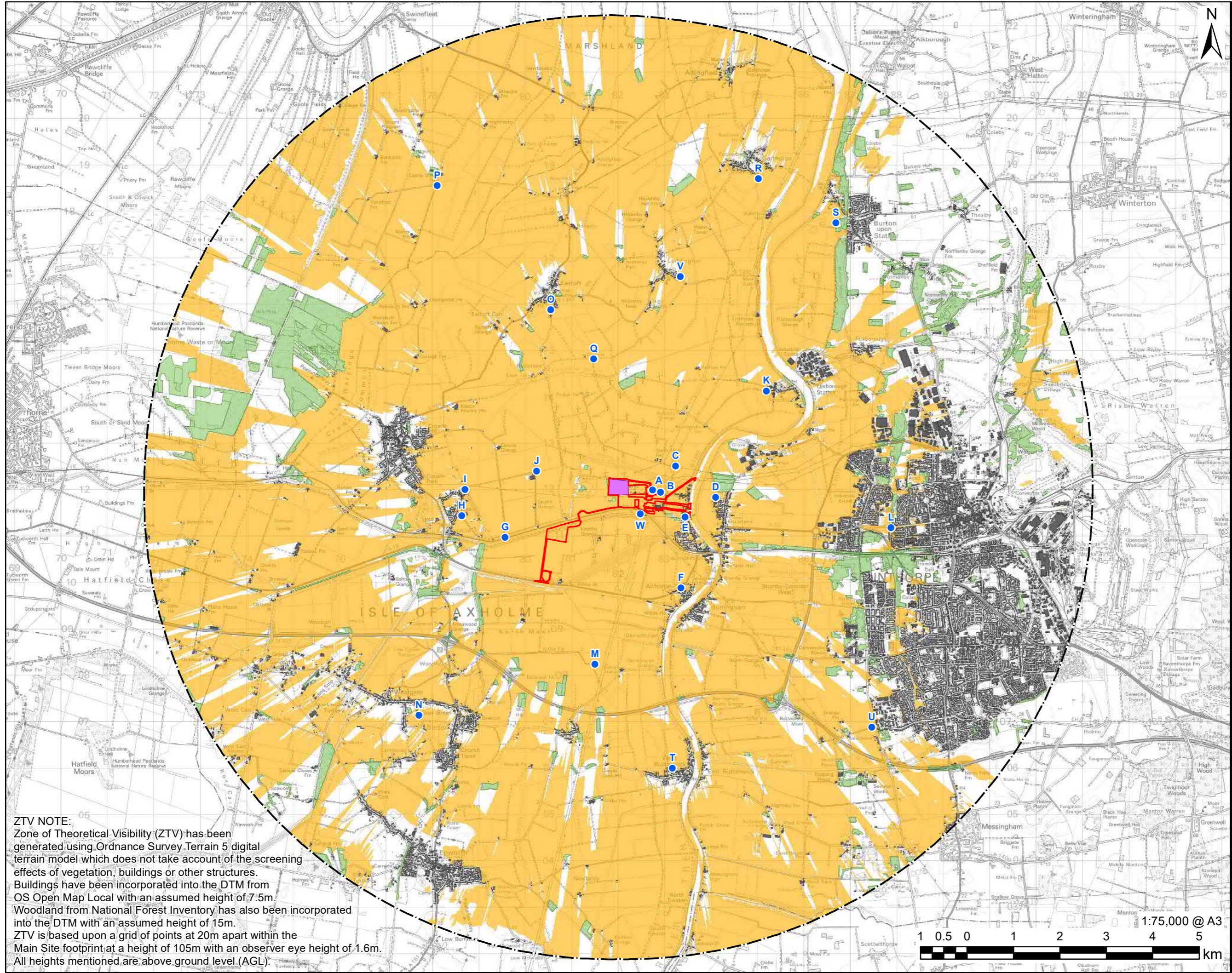
NOTES

Reproduced from Ordnance Survey digital map data © Crown copyright 2022. All rights reserved. Licence number 0100031673. Contains Ordnance Survey Data © Crown Copyright and database right 2022. Conservation Areas: North Lincolnshire Council web mapping service 2022. Conservation Areas for Doncaster, Lincolnshire and East Riding of Yorkshire Council were digitised from both PDFs supplied and online web-mapping services. Lincolnshire Wold AONB Proposed Extension was digitised from a low quality georeferenced image; as such this is an indicative area, the boundaries of which should not be used to make planning decisions. Contains public sector information licensed under the Open Government Licence v3.0.

ISSUE PURPOSE
 ENV STATEMENT ADDENDUM
PROJECT NUMBER
 60625943
SHEET TITLE
 Landscape Context

SHEET NUMBER
 Figure 14.3

This drawing has been prepared for the use of AECOM's client. It may not be used, modified, reproduced or relied upon by third parties, except as agreed by AECOM or as required by law. AECOM accepts no responsibility and disclaims any liability whatsoever, to any party that uses or relies on this drawing without AECOM's express written consent. Do not scale this document. All measurements must be obtained from the stated dimensions.



ZTV NOTE:
 Zone of Theoretical Visibility (ZTV) has been generated using Ordnance Survey Terrain 5 digital terrain model which does not take account of the screening effects of vegetation, buildings or other structures. Buildings have been incorporated into the DTM from OS Open Map Local with an assumed height of 7.5m. Woodland from National Forest Inventory has also been incorporated into the DTM with an assumed height of 15m. ZTV is based upon a grid of points at 20m apart within the Main Site footprint at a height of 105m with an observer eye height of 1.6m. All heights mentioned are above ground level (AGL).

- The Order Limits
- Main Site 10km Study Area
- Main Site
- National Forest Inventory - Woodland - 15m Height
- Building - 7.5m Height
- Zone of Theoretical Visibility
- Potential Viewpoint Location

NOTES

Reproduced from Ordnance Survey digital map data © Crown copyright 2022. All rights reserved. Licence number 0100031673. Contains OS data © Crown copyright and database right 2022. Contains, or is based on, information supplied by the Forestry Commission. © Crown copyright and database right 2022. Ordnance Survey 100021242.

ISSUE PURPOSE

ENV STATEMENT ADDENDUM

PROJECT NUMBER

60625943

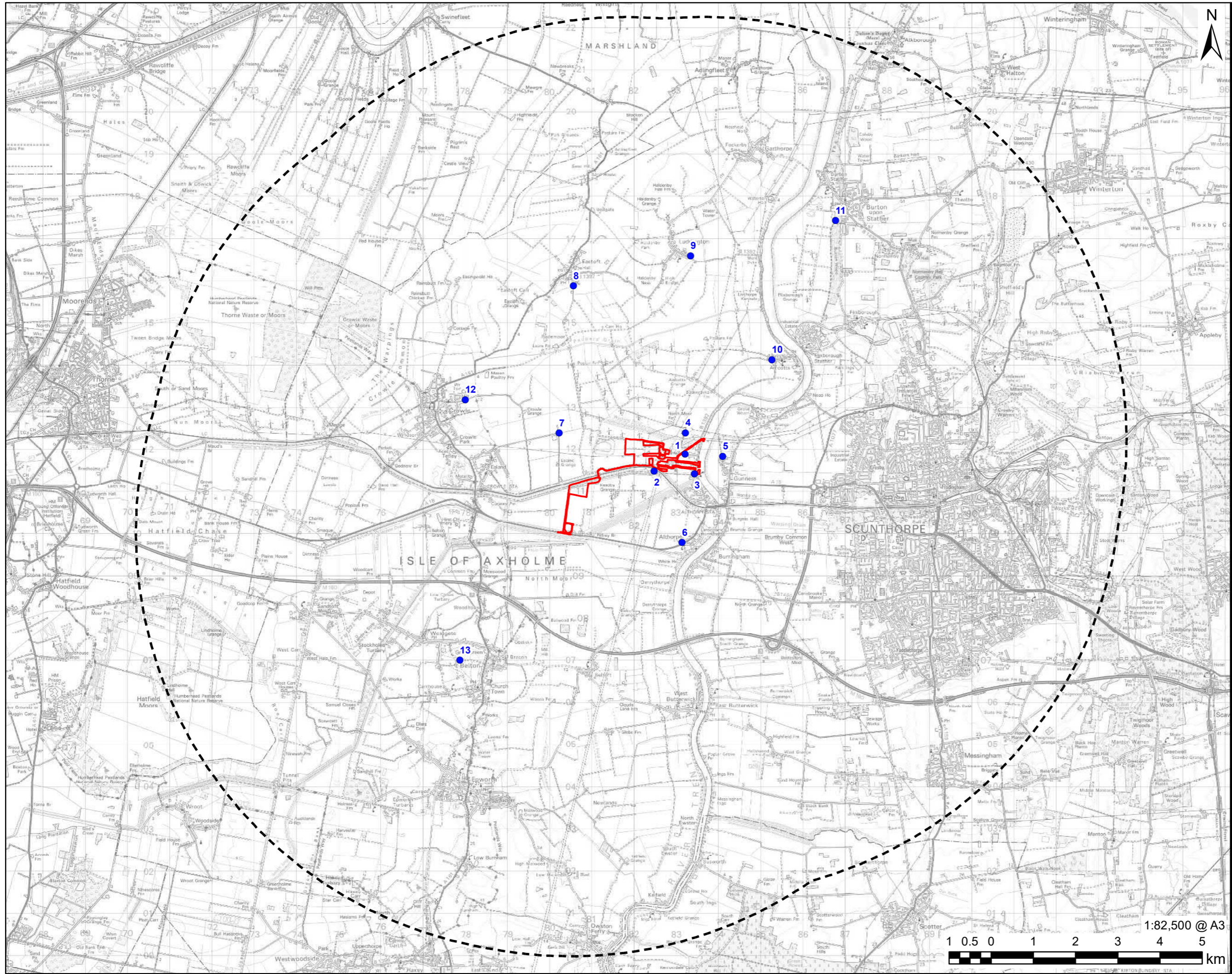
SHEET TITLE

Zone of Theoretical Visibility and Potential Viewpoint Locations - 105m Stack

SHEET NUMBER

Figure 14.4

This drawing has been prepared for the use of AECOM's client. It may not be used, modified, reproduced or relied upon by third parties, except as agreed by AECOM or as required by law. AECOM accepts no responsibility, and disclaims any liability whatsoever, to any party that uses or relies on this drawing without AECOM's express written consent. Do not scale this document. All measurements must be obtained from the stated dimensions.



PROJECT
The Keadby 3 (Carbon Capture Equipped Gas Fired Generating Station) Order

APPLICANT
Keadby Generation Limited

CONSULTANT
AECOM Limited
2 City Walk
Leeds
LS11 9AR
T: 0113 391 6800
www.aecom.com

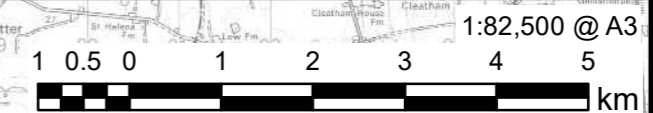
LEGEND

- The Order Limits
- 10km Study Area
- Representative Viewpoint Location

NOTES
Reproduced from Ordnance Survey digital map data © Crown copyright 2022. All rights reserved. Licence number 0100031673.

ISSUE PURPOSE
ENV STATEMENT ADDENDUM
PROJECT NUMBER
60625943
SHEET TITLE
Representative Viewpoints

SHEET NUMBER
Figure 14.5



This drawing has been prepared for the use of AECOM's client. It may not be used, modified, reproduced or relied upon by third parties, except as agreed by AECOM or as required by law. AECOM accepts no responsibility and disclaims any liability whatsoever, to any party that uses or relies on this drawing without AECOM's express written consent. Do not scale this document. All measurements must be obtained from the stated dimensions.



KEY:
 Red – Visible
 Blue – Not Visible

WIRELINE SUMMER (UP TO 2 ABSORBERS)



AECOM Imagine it. Delivered.

Visualisation Type: 4
 Projection: Cylindrical
 Enlargement Factor: 96%
 Paper Size: A1
 Date / Time: 28/09/2020 12:38

Camera: Canon EOS 5D Mk3
 Lens: Sigma 50mm f1.4 HSM
 Horizontal Field of View: 90°
 Direction of View: 202° (SW)
 Location: E483216 N411886

Eye level: 3.2m AOD
 Height of Camera: 1.65m
 Distance to Site: 1000m

Note:
 Images to be viewed at a comfortable arm's length.

The Keadby 3 (Carbon Capture Equipped Gas Fired Generating Station) Order
 Viewpoint 1 - Chapel Lane West, Keadby
 Figure 14.19c



BASELINE WINTER



AECOM Imagine it. Delivered.

Visualisation Type: 4
 Projection: Cylindrical
 Enlargement Factor: 96%
 Paper Size: A1
 Date / Time: 22/01/2021 13:11

Camera: Canon EOS 5D Mk3
 Lens: Sigma 50mm f1.4 HSM
 Horizontal Field of View: 90°
 Direction of View: 202° (SW)
 Location: E483216 N411886

Eye level: 3.2m AOD
 Height of Camera: 1.65m
 Distance to Site: 1000m

Note:
 Images to be viewed at a comfortable arm's length.

The Keadby 3 (Carbon Capture Equipped Gas Fired Generating Station) Order
 Viewpoint 1 - Chapel Lane West, Keadby
 Figure 14.19d



KEY:
 Red – Visible
 Blue – Not Visible

WIRELINE WINTER (SINGLE ABSORBER)



AECOM Imagine it. Delivered.

Visualisation Type: 4
 Projection: Cylindrical
 Enlargement Factor: 96%
 Paper Size: A1
 Date / Time: 22/01/2021 13:11

Camera: Canon EOS 5D Mk3
 Lens: Sigma 50mm f1.4 HSM
 Horizontal Field of View: 90°
 Direction of View: 202° (SW)
 Location: E483216 N411886

Eye level: 3.2m AOD
 Height of Camera: 1.65m
 Distance to Site: 1000m

Note:
 Images to be viewed at a comfortable arm's length.

The Keadby 3 (Carbon Capture Equipped Gas Fired Generating Station) Order
 Viewpoint 1 - Chapel Lane West, Keadby
 Figure 14.19e



KEY:
 Red – Visible
 Blue – Not Visible

WIRELINE WINTER (UP TO 2 ABSORBERS)



AECOM Imagine it. Delivered.

Visualisation Type: 4
 Projection: Cylindrical
 Enlargement Factor: 96%
 Paper Size: A1
 Date / Time: 22/01/2021 13:11

Camera: Canon EOS 5D Mk3
 Lens: Sigma 50mm f1.4 HSM
 Horizontal Field of View: 90°
 Direction of View: 202° (SW)
 Location: E483216 N411886

Eye level: 3.2m AOD
 Height of Camera: 1.65m
 Distance to Site: 1000m

Note:
 Images to be viewed at a comfortable arm's length.

The Keadby 3 (Carbon Capture Equipped Gas Fired Generating Station) Order
 Viewpoint 1 - Chapel Lane West, Keadby
 Figure 14.19f



PHOTOMONTAGE WINTER (SINGLE ABSORBER)



AECOM Imagine it. Delivered.

Visualisation Type: 4
 Projection: Cylindrical
 Enlargement Factor: 96%
 Paper Size: A1
 Date / Time: 22/01/2021 13:11

Camera: Canon EOS 5D Mk3
 Lens: Sigma 50mm f1.4 HSM
 Horizontal Field of View: 90°
 Direction of View: 202° (SW)
 Location: E483216 N411886

Eye level: 3.2m AOD
 Height of Camera: 1.65m
 Distance to Site: 1000m

Note:
 Images to be viewed at a comfortable arm's length.

The Keadby 3 (Carbon Capture Equipped Gas Fired Generating Station) Order
 Viewpoint 1 - Chapel Lane West, Keadby
 Figure 14.19g



PHOTOMONTAGE WINTER K1 REMOVED (SINGLE ABSORBER)



AECOM Imagine it. Delivered.

Visualisation Type: 4
 Projection: Cylindrical
 Enlargement Factor: 96%
 Paper Size: A1
 Date / Time: 22/01/2021 13:11

Camera: Canon EOS 5D Mk3
 Lens: Sigma 50mm f1.4 HSM
 Horizontal Field of View: 90°
 Direction of View: 202° (SW)
 Location: E483216 N411886

Eye level: 3.2m AOD
 Height of Camera: 1.65m
 Distance to Site: 1000m

Note: Images to be viewed at a comfortable arm's length.

The Keadby 3 (Carbon Capture Equipped Gas Fired Generating Station) Order
 Viewpoint 1 - Chapel Lane West, Keadby
 Figure 14.19h



PHOTOMONTAGE WINTER (UP TO 2 ABSORBERS)



AECOM Imagine it. Delivered.

Visualisation Type: 4
 Projection: Cylindrical
 Enlargement Factor: 96%
 Paper Size: A1
 Date / Time: 22/01/2021 13:11

Camera: Canon EOS 5D Mk3
 Lens: Sigma 50mm f1.4 HSM
 Horizontal Field of View: 90°
 Direction of View: 202° (SW)
 Location: E483216 N411886

Eye level: 3.2m AOD
 Height of Camera: 1.65m
 Distance to Site: 1000m

Note:
 Images to be viewed at a comfortable arm's length.

The Keadby 3 (Carbon Capture Equipped Gas Fired Generating Station) Order
 Viewpoint 1 - Chapel Lane West, Keadby
 Figure 14.19i



PHOTOMONTAGE WINTER K1 REMOVED (UP TO 2 ABSORBERS)



AECOM Imagine it. Delivered.

Visualisation Type: 4
 Projection: Cylindrical
 Enlargement Factor: 96%
 Paper Size: A1
 Date / Time: 22/01/2021 13:11

Camera: Canon EOS 5D Mk3
 Lens: Sigma 50mm f1.4 HSM
 Horizontal Field of View: 90°
 Direction of View: 202° (SW)
 Location: E483216 N411886

Eye level: 3.2m AOD
 Height of Camera: 1.65m
 Distance to Site: 1000m

Note: Images to be viewed at a comfortable arm's length.

The Keadby 3 (Carbon Capture Equipped Gas Fired Generating Station) Order
 Viewpoint 1 - Chapel Lane West, Keadby
 Figure 14.19j



BASELINE SUMMER

90° 85° 80° 75° 70° 65° 60° 55° 50° 45° 40° 35° 30° 25° 20° 15° 10° 5° 0°



Imagine it. Delivered.
 Visualisation Type: 4
 Projection: Cylindrical
 Enlargement Factor: 96%
 Paper Size: A1
 Date / Time: 28/09/2020 12:08

Camera: Canon EOS 5D Mk3
 Lens: Sigma 50mm f1.4 HSM
 Horizontal Field of View: 180°
 Direction of View: 5.1° (N)
 Location: E482469 N411470

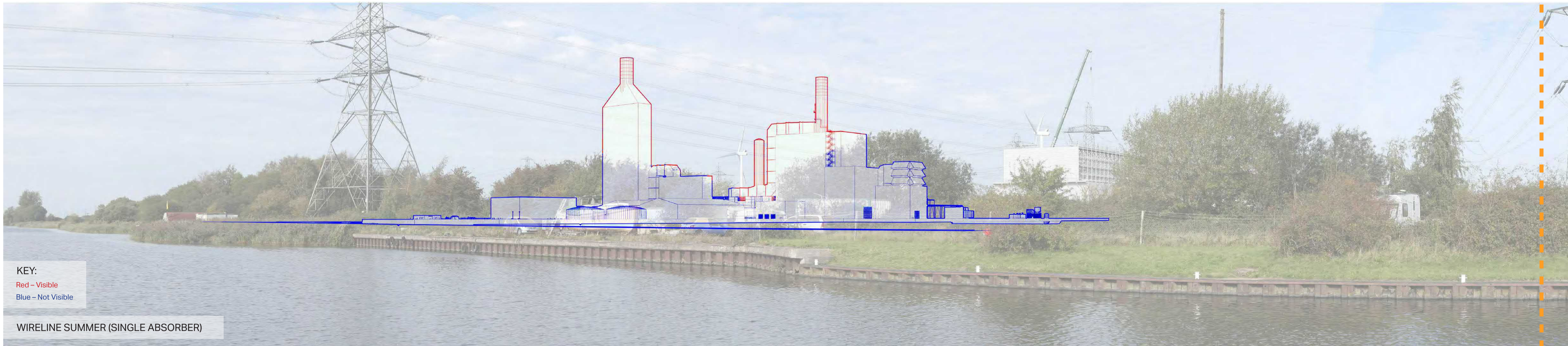
Eye level: 5.1m AOD
 Height of Camera: 1.65m
 Distance to Site: 342m

Note:
 Images to be viewed at a comfortable arm's length.

The Keadby 3 (Carbon Capture Equipped Gas Fired Generating Station) Order
 Viewpoint 2 – Gate Keepers Residence Vazon Bridge, Keadby
 Figure 14.20a



5° 10° 15° 20° 25° 30° 35° 40° 45° 50° 55° 60° 65° 70° 75° 80° 85° 90°



KEY:
 Red – Visible
 Blue – Not Visible

WIRELINE SUMMER (SINGLE ABSORBER)



AECOM Imagine it. Delivered.

Visualisation Type: 4
 Projection: Cylindrical
 Enlargement Factor: 96%
 Paper Size: A1
 Date / Time: 28/09/2020 12:08

Camera: Canon EOS 5D Mk3
 Lens: Sigma 50mm f1.4 HSM
 Horizontal Field of View: 180°
 Direction of View: 5.1° (N)
 Location: E482469 N411470

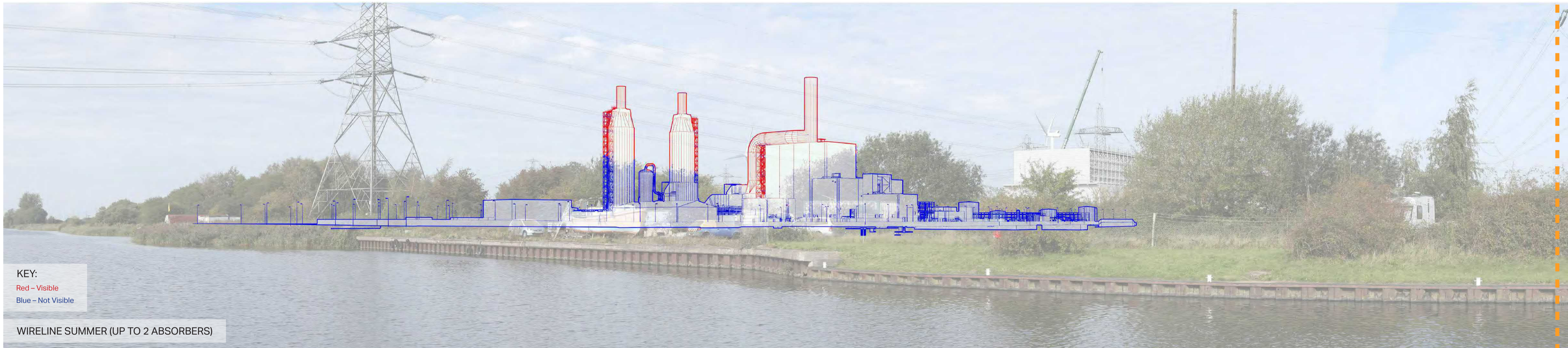
Eye level: 5.1m AOD
 Height of Camera: 1.65m
 Distance to Site: 342m

Note:
 Images to be viewed at a comfortable arm's length.

The Keadby 3 (Carbon Capture Equipped Gas Fired Generating Station) Order
 Viewpoint 2 – Gate Keepers Residence Vazon Bridge, Keadby
 Figure 14.20b

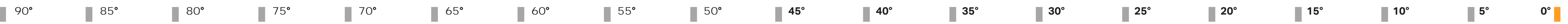


5° 10° 15° 20° 25° 30° 35° 40° 45° 50° 55° 60° 65° 70° 75° 80° 85° 90°



KEY:
 Red – Visible
 Blue – Not Visible

WIRELINE SUMMER (UP TO 2 ABSORBERS)



AECOM Imagine it. Delivered.

Visualisation Type: 4
 Projection: Cylindrical
 Enlargement Factor: 96%
 Paper Size: A1
 Date / Time: 28/09/2020 12:08

Camera: Canon EOS 5D Mk3
 Lens: Sigma 50mm f1.4 HSM
 Horizontal Field of View: 180°
 Direction of View: 5.1° (N)
 Location: E482469 N411470

Eye level: 5.1m AOD
 Height of Camera: 1.65m
 Distance to Site: 342m

Note:
 Images to be viewed at a comfortable arm's length.

The Keadby 3 (Carbon Capture Equipped Gas Fired Generating Station) Order
 Viewpoint 2 – Gate Keepers Residence Vazon Bridge, Keadby
 Figure 14.20c



5° 10° 15° 20° 25° 30° 35° 40° 45° 50° 55° 60° 65° 70° 75° 80° 85° 90°



BASELINE WINTER

90° 85° 80° 75° 70° 65° 60° 55° 50° 45° 40° 35° 30° 25° 20° 15° 10° 5° 0°



Imagine it.
Delivered.

Visualisation Type: 4
Projection: Cylindrical
Enlargement Factor: 96%
Paper Size: A1
Date / Time: 22/01/2021 13:43

Camera: Canon EOS 5D Mk3
Lens: Sigma 50mm f1.4 HSM
Horizontal Field of View: 180°
Direction of View: 5.1° (N)
Location: E482469 N411470

Eye level: 5.1m AOD
Height of Camera: 1.65m
Distance to Site: 342m

Note:
Images to be viewed at a comfortable arm's length.

The Keadby 3 (Carbon Capture Equipped Gas Fired Generating Station) Order
Viewpoint 2 – Gate Keepers Residence Vazon Bridge, Keadby
Figure 14.20d

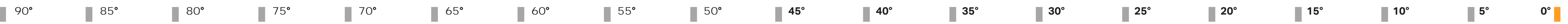


5° 10° 15° 20° 25° 30° 35° 40° 45° 50° 55° 60° 65° 70° 75° 80° 85° 90°



KEY:
 Red – Visible
 Blue – Not Visible

WIRELINE WINTER (SINGLE ABSORBER)



AECOM Imagine it. Delivered.

Visualisation Type: 4
 Projection: Cylindrical
 Enlargement Factor: 96%
 Paper Size: A1
 Date / Time: 22/01/2021 13:43

Camera: Canon EOS 5D Mk3
 Lens: Sigma 50mm f1.4 HSM
 Horizontal Field of View: 180°
 Direction of View: 5.1° (N)
 Location: E482469 N411470

Eye level: 5.1m AOD
 Height of Camera: 1.65m
 Distance to Site: 342m

Note:
 Images to be viewed at a comfortable arm's length.

The Keadby 3 (Carbon Capture Equipped Gas Fired Generating Station) Order
 Viewpoint 2 – Gate Keepers Residence Vazon Bridge, Keadby
 Figure 14.20e



5° 10° 15° 20° 25° 30° 35° 40° 45° 50° 55° 60° 65° 70° 75° 80° 85° 90°



KEY:
 Red – Visible
 Blue – Not Visible

WIRELINE WINTER (UP TO 2 ABSORBERS)



AECOM Imagine it. Delivered.

Visualisation Type: 4
 Projection: Cylindrical
 Enlargement Factor: 96%
 Paper Size: A1
 Date / Time: 22/01/2021 13:43

Camera: Canon EOS 5D Mk3
 Lens: Sigma 50mm f1.4 HSM
 Horizontal Field of View: 180°
 Direction of View: 5.1° (N)
 Location: E482469 N411470

Eye level: 5.1m AOD
 Height of Camera: 1.65m
 Distance to Site: 342m

Note:
 Images to be viewed at a comfortable arm's length.

The Keadby 3 (Carbon Capture Equipped Gas Fired Generating Station) Order
 Viewpoint 2 – Gate Keepers Residence Vazon Bridge, Keadby

Figure 14.20f



5° 10° 15° 20° 25° 30° 35° 40° 45° 50° 55° 60° 65° 70° 75° 80° 85° 90°



PHOTOMONTAGE WINTER (SINGLE ABSORBER)

90° 85° 80° 75° 70° 65° 60° 55° 50° 45° 40° 35° 30° 25° 20° 15° 10° 5° 0°



Imagine it.
Delivered.

Visualisation Type: 4
Projection: Cylindrical
Enlargement Factor: 96%
Paper Size: A1
Date / Time: 22/01/2021 13:43

Camera: Canon EOS 5D Mk3
Lens: Sigma 50mm f1.4 HSM
Horizontal Field of View: 180°
Direction of View: 5.1° (N)
Location: E482469 N411470

Eye level: 5.1m AOD
Height of Camera: 1.65m
Distance to Site: 342m

Note:
Images to be viewed at a comfortable arm's length.

The Keadby 3 (Carbon Capture Equipped Gas Fired Generating Station) Order
Viewpoint 2 – Gate Keepers Residence Vazon Bridge, Keadby
Figure 14.20g



5° 10° 15° 20° 25° 30° 35° 40° 45° 50° 55° 60° 65° 70° 75° 80° 85° 90°



PHOTOMONTAGE WINTER K1 REMOVED (SINGLE ABSORBER)

90° 85° 80° 75° 70° 65° 60° 55° 50° 45° 40° 35° 30° 25° 20° 15° 10° 5° 0°

AECOM Imagine it. Delivered.

Visualisation Type: 4
 Projection: Cylindrical
 Enlargement Factor: 96%
 Paper Size: A1
 Date / Time: 22/01/2021 13:43

Camera: Canon EOS 5D Mk3
 Lens: Sigma 50mm f1.4 HSM
 Horizontal Field of View: 180°
 Direction of View: 5.1° (N)
 Location: E482469 N411470

Eye level: 5.1m AOD
 Height of Camera: 1.65m
 Distance to Site: 342m

Note:
 Images to be viewed at a comfortable arm's length.

The Keadby 3 (Carbon Capture Equipped Gas Fired Generating Station) Order
 Viewpoint 2 – Gate Keepers Residence Vazon Bridge, Keadby
 Figure 14.20h



5° 10° 15° 20° 25° 30° 35° 40° 45° 50° 55° 60° 65° 70° 75° 80° 85° 90°



PHOTOMONTAGE WINTER (UP TO 2 ABSORBERS)

90° 85° 80° 75° 70° 65° 60° 55° 50° 45° 40° 35° 30° 25° 20° 15° 10° 5° 0°



Imagine it.
Delivered.

Visualisation Type: 4
Projection: Cylindrical
Enlargement Factor: 96%
Paper Size: A1
Date / Time: 22/01/2021 13:43

Camera: Canon EOS 5D Mk3
Lens: Sigma 50mm f1.4 HSM
Horizontal Field of View: 180°
Direction of View: 5.1° (N)
Location: E482469 N411470

Eye level: 5.1m AOD
Height of Camera: 1.65m
Distance to Site: 342m

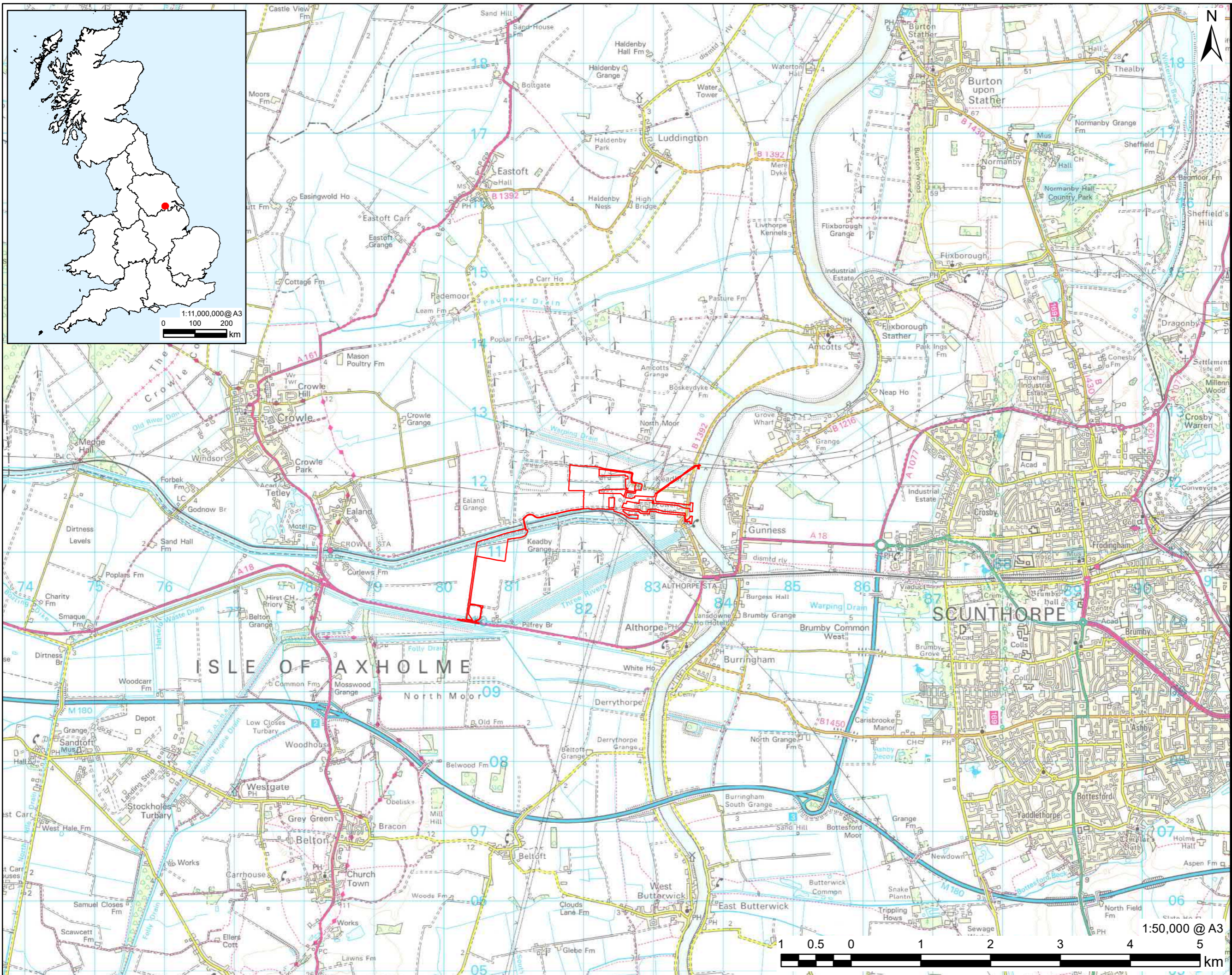
Note:
Images to be viewed at a comfortable arm's length.

The Keadby 3 (Carbon Capture Equipped Gas Fired Generating Station) Order
Viewpoint 2 – Gate Keepers Residence Vazon Bridge, Keadby
Figure 14.20i



5° 10° 15° 20° 25° 30° 35° 40° 45° 50° 55° 60° 65° 70° 75° 80° 85° 90°

Revision: 03 Drawn: JW Checked: CA Approved: HN Date: 06/05/2022
Filename: K:\07 CAD & GIS\02_Maps\Environmental_Statement_Addendum_Jan22\K_ES_Add_Fig_1_Site_Location_A3_20220506_R02.mxd



PROJECT
The Keadby 3 (Carbon Capture Equipped Gas Fired Generating Station) Order

APPLICANT
Keadby Generation Limited

CONSULTANT
AECOM Limited
2 City Walk
Leeds
LS11 9AR
T: 0113 391 6800
www.aecom.com

LEGEND
The Order Limits

NOTES
Reproduced from Ordnance Survey digital map data © Crown copyright 2022. All rights reserved. Licence number 0100031673.

ISSUE PURPOSE
ENV STATEMENT ADDENDUM
PROJECT NUMBER
60625943
SHEET TITLE
Site Location Plan
SHEET NUMBER
Figure 1.1



PHOTOMONTAGE WINTER K1 REMOVED (UP TO 2 ABSORBERS)

90° 85° 80° 75° 70° 65° 60° 55° 50° 45° 40° 35° 30° 25° 20° 15° 10° 5° 0°

AECOM Imagine it. Delivered.

Visualisation Type: 4
 Projection: Cylindrical
 Enlargement Factor: 96%
 Paper Size: A1
 Date / Time: 22/01/2021 13:43

Camera: Canon EOS 5D Mk3
 Lens: Sigma 50mm f1.4 HSM
 Horizontal Field of View: 180°
 Direction of View: 5.1° (N)
 Location: E482469 N411470

Eye level: 5.1m AOD
 Height of Camera: 1.65m
 Distance to Site: 342m

Note:
 Images to be viewed at a comfortable arm's length.

The Keadby 3 (Carbon Capture Equipped Gas Fired Generating Station) Order
 Viewpoint 2 – Gate Keepers Residence Vazon Bridge, Keadby
 Figure 14.20j



5° 10° 15° 20° 25° 30° 35° 40° 45° 50° 55° 60° 65° 70° 75° 80° 85° 90°



BASELINE SUMMER



AECOM Imagine it. Delivered.

Visualisation Type: 4
 Projection: Cylindrical
 Enlargement Factor: 96%
 Paper Size: A1
 Date / Time: 28/09/2020 10:43

Camera: Canon EOS 5D Mk3
 Lens: Sigma 50mm f1.4 HSM
 Horizontal Field of View: 90°
 Direction of View: 241° (SW)
 Location: E483215 N412378

Eye level: 3.1m AOD
 Height of Camera: 1.65m
 Distance to Site: 1024m

Note:
 Images to be viewed at a comfortable arm's length.

The Keadby 3 (Carbon Capture Equipped Gas Fired Generating Station) Order
 Viewpoint 4 - PRoW (KEAD9, KEAD10), north of Keadby
 Figure 14.21a



KEY:
 Red – Visible
 Blue – Not Visible

WIRELINE SUMMER (SINGLE ABSORBER)



AECOM Imagine it. Delivered.

Visualisation Type: 4
 Projection: Cylindrical
 Enlargement Factor: 96%
 Paper Size: A1
 Date / Time: 28/09/2020 10:43

Camera: Canon EOS 5D Mk3
 Lens: Sigma 50mm f1.4 HSM
 Horizontal Field of View: 90°
 Direction of View: 241° (SW)
 Location: E483215 N412378

Eye level: 3.1m AOD
 Height of Camera: 1.65m
 Distance to Site: 1024m

Note:
 Images to be viewed at a comfortable arm's length.

The Keadby 3 (Carbon Capture Equipped Gas Fired Generating Station) Order
 Viewpoint 4 - PRoW (KEAD9, KEAD10), north of Keadby
 Figure 14.21b



KEY:
 Red – Visible
 Blue – Not Visible

WIRELINE SUMMER (UP TO 2 ABSORBERS)



AECOM Imagine it. Delivered.

Visualisation Type: 4
 Projection: Cylindrical
 Enlargement Factor: 96%
 Paper Size: A1
 Date / Time: 28/09/2020 10:43

Camera: Canon EOS 5D Mk3
 Lens: Sigma 50mm f1.4 HSM
 Horizontal Field of View: 90°
 Direction of View: 241° (SW)
 Location: E483215 N412378

Eye level: 3.1m AOD
 Height of Camera: 1.65m
 Distance to Site: 1024m

Note:
 Images to be viewed at a comfortable arm's length.

The Keadby 3 (Carbon Capture Equipped Gas Fired Generating Station) Order
 Viewpoint 4 - PRoW (KEAD9, KEAD10), north of Keadby
 Figure 14.21c



BASELINE WINTER



AECOM Imagine it. Delivered.

Visualisation Type: 4
 Projection: Cylindrical
 Enlargement Factor: 96%
 Paper Size: A1
 Date / Time: 22/01/2021 13:26

Camera: Canon EOS 5D Mk3
 Lens: Sigma 50mm f1.4 HSM
 Horizontal Field of View: 90°
 Direction of View: 241° (SW)
 Location: E483215 N412378

Eye level: 3.1m AOD
 Height of Camera: 1.65m
 Distance to Site: 1024m

Note:
 Images to be viewed at a comfortable arm's length.

The Keadby 3 (Carbon Capture Equipped Gas Fired Generating Station) Order
 Viewpoint 4 - PRoW (KEAD9, KEAD10), north of Keadby
 Figure 14.21d



KEY:
 Red – Visible
 Blue – Not Visible

WIRELINE WINTER (SINGLE ABSORBER)



AECOM Imagine it. Delivered.

Visualisation Type: 4
 Projection: Cylindrical
 Enlargement Factor: 96%
 Paper Size: A1
 Date / Time: 22/01/2021 13:26

Camera: Canon EOS 5D Mk3
 Lens: Sigma 50mm f1.4 HSM
 Horizontal Field of View: 90°
 Direction of View: 241° (SW)
 Location: E483215 N412378

Eye level: 3.1m AOD
 Height of Camera: 1.65m
 Distance to Site: 1024m

Note:
 Images to be viewed at a comfortable arm's length.

The Keadby 3 (Carbon Capture Equipped Gas Fired Generating Station) Order
 Viewpoint 4 - PRoW (KEAD9, KEAD10), north of Keadby
 Figure 14.21e



KEY:
 Red – Visible
 Blue – Not Visible

WIRELINE WINTER (UP TO 2 ABSORBERS)



AECOM Imagine it. Delivered.

Visualisation Type: 4
 Projection: Cylindrical
 Enlargement Factor: 96%
 Paper Size: A1
 Date / Time: 22/01/2021 13:26

Camera: Canon EOS 5D Mk3
 Lens: Sigma 50mm f1.4 HSM
 Horizontal Field of View: 90°
 Direction of View: 241° (SW)
 Location: E483215 N412378

Eye level: 3.1m AOD
 Height of Camera: 1.65m
 Distance to Site: 1024m

Note:
 Images to be viewed at a comfortable arm's length.

The Keadby 3 (Carbon Capture Equipped Gas Fired Generating Station) Order
 Viewpoint 4 - PRoW (KEAD9, KEAD10), north of Keadby
 Figure 14.21f



PHOTOMONTAGE WINTER (SINGLE ABSORBER)



AECOM Imagine it. Delivered.

Visualisation Type: 4
 Projection: Cylindrical
 Enlargement Factor: 96%
 Paper Size: A1
 Date / Time: 22/01/2021 13:26

Camera: Canon EOS 5D Mk3
 Lens: Sigma 50mm f1.4 HSM
 Horizontal Field of View: 90°
 Direction of View: 241° (SW)
 Location: E483215 N412378

Eye level: 3.1m AOD
 Height of Camera: 1.65m
 Distance to Site: 1024m

Note:
 Images to be viewed at a comfortable arm's length.

The Keadby 3 (Carbon Capture Equipped Gas Fired Generating Station) Order
 Viewpoint 4 - PRoW (KEAD9, KEAD10), north of Keadby
 Figure 14.21g



PHOTOMONTAGE WINTER K1 REMOVED (SINGLE ABSORBER)



AECOM Imagine it. Delivered.

Visualisation Type: 4
 Projection: Cylindrical
 Enlargement Factor: 96%
 Paper Size: A1
 Date / Time: 22/01/2021 13:26

Camera: Canon EOS 5D Mk3
 Lens: Sigma 50mm f1.4 HSM
 Horizontal Field of View: 90°
 Direction of View: 241° (SW)
 Location: E483215 N412378

Eye level: 3.1m AOD
 Height of Camera: 1.65m
 Distance to Site: 1024m

Note:
 Images to be viewed at a comfortable arm's length.

The Keadby 3 (Carbon Capture Equipped Gas Fired Generating Station) Order
 Viewpoint 4 - PRoW (KEAD9, KEAD10), north of Keadby
 Figure 14.21h



PHOTOMONTAGE WINTER (UP TO 2 ABSORBERS)



AECOM Imagine it. Delivered.

Visualisation Type: 4
 Projection: Cylindrical
 Enlargement Factor: 96%
 Paper Size: A1
 Date / Time: 22/01/2021 13:26

Camera: Canon EOS 5D Mk3
 Lens: Sigma 50mm f1.4 HSM
 Horizontal Field of View: 90°
 Direction of View: 241° (SW)
 Location: E483215 N412378

Eye level: 3.1m AOD
 Height of Camera: 1.65m
 Distance to Site: 1024m

Note:
 Images to be viewed at a comfortable arm's length.

The Keadby 3 (Carbon Capture Equipped Gas Fired Generating Station) Order
 Viewpoint 4 - PRoW (KEAD9, KEAD10), north of Keadby
 Figure 14.21i



AECOM Imagine it. Delivered.

Visualisation Type: 4
 Projection: Cylindrical
 Enlargement Factor: 96%
 Paper Size: A1
 Date / Time: 22/01/2021 13:26

Camera: Canon EOS 5D Mk3
 Lens: Sigma 50mm f1.4 HSM
 Horizontal Field of View: 90°
 Direction of View: 241° (SW)
 Location: E483215 N412378

Eye level: 3.1m AOD
 Height of Camera: 1.65m
 Distance to Site: 1024m

Note:
 Images to be viewed at a comfortable arm's length.

The Keadby 3 (Carbon Capture Equipped Gas Fired Generating Station) Order
 Viewpoint 4 - PRoW (KEAD9, KEAD10), north of Keadby
 Figure 14.21j



BASELINE SUMMER



AECOM Imagine it. Delivered.

Visualisation Type: 4
 Projection: Cylindrical
 Enlargement Factor: 96%
 Paper Size: A1
 Date / Time: 28/09/2020 11:10

Camera: Canon EOS 5D Mk3
 Lens: Sigma 50mm f1.4 HSM
 Horizontal Field of View: 90°
 Direction of View: 283° (W)
 Location: E484110 N411830

Eye level: 5.5m AOD
 Height of Camera: 1.65m
 Distance to Site: 1887m

Note:
 Images to be viewed at a comfortable arm's length.

The Keadby 3 (Carbon Capture Equipped Gas Fired Generating Station) Order
 Viewpoint 5 - PRoW (GUNN179), north-east of Gunness
 Figure 14.22a



KEY:
 Red – Visible
 Blue – Not Visible

WIRELINE SUMMER (SINGLE ABSORBER)



AECOM Imagine it. Delivered.

Visualisation Type: 4
 Projection: Cylindrical
 Enlargement Factor: 96%
 Paper Size: A1
 Date / Time: 28/09/2020 11:10

Camera: Canon EOS 5D Mk3
 Lens: Sigma 50mm f1.4 HSM
 Horizontal Field of View: 90°
 Direction of View: 283° (W)
 Location: E484110 N411830

Eye level: 5.5m AOD
 Height of Camera: 1.65m
 Distance to Site: 1887m

Note:
 Images to be viewed at a comfortable arm's length.

The Keadby 3 (Carbon Capture Equipped Gas Fired Generating Station) Order
 Viewpoint 5 - PRoW (GUNN179), north-east of Gunness
 Figure 14.22b



KEY:
 Red – Visible
 Blue – Not Visible

WIRELINE SUMMER (UP TO 2 ABSORBERS)



AECOM Imagine it. Delivered.

Visualisation Type: 4
 Projection: Cylindrical
 Enlargement Factor: 96%
 Paper Size: A1
 Date / Time: 28/09/2020 11:10

Camera: Canon EOS 5D Mk3
 Lens: Sigma 50mm f1.4 HSM
 Horizontal Field of View: 90°
 Direction of View: 283° (W)
 Location: E484110 N411830

Eye level: 5.5m AOD
 Height of Camera: 1.65m
 Distance to Site: 1887m

Note:
 Images to be viewed at a comfortable arm's length.

The Keadby 3 (Carbon Capture Equipped Gas Fired Generating Station) Order
 Viewpoint 5 - PRoW (GUNN179), north-east of Gunness
 Figure 14.22c



BASELINE WINTER



AECOM Imagine it. Delivered.

Visualisation Type: 4
 Projection: Cylindrical
 Enlargement Factor: 96%
 Paper Size: A1
 Date / Time: 22/01/2021 14:18

Camera: Canon EOS 5D Mk3
 Lens: Sigma 50mm f1.4 HSM
 Horizontal Field of View: 90°
 Direction of View: 283° (W)
 Location: E484110 N411830

Eye level: 5.5m AOD
 Height of Camera: 1.65m
 Distance to Site: 1887m

Note:
 Images to be viewed at a comfortable arm's length.

The Keadby 3 (Carbon Capture Equipped Gas Fired Generating Station) Order
 Viewpoint 5 - PRoW (GUNN179), north-east of Gunness
 Figure 14.22d



KEY:
 Red - Visible
 Blue - Not Visible

WIRELINE WINTER (SINGLE ABSORBER)



AECOM Imagine it. Delivered.

Visualisation Type: 4
 Projection: Cylindrical
 Enlargement Factor: 96%
 Paper Size: A1
 Date / Time: 22/01/2021 14:18

Camera: Canon EOS 5D Mk3
 Lens: Sigma 50mm f1.4 HSM
 Horizontal Field of View: 90°
 Direction of View: 283° (W)
 Location: E484110 N411830

Eye level: 5.5m AOD
 Height of Camera: 1.65m
 Distance to Site: 1887m

Note:
 Images to be viewed at a comfortable arm's length.

The Keadby 3 (Carbon Capture Equipped Gas Fired Generating Station) Order
 Viewpoint 5 - PRoW (GUNN179), north-east of Gunness
 Figure 14.22e



KEY:
 Red – Visible
 Blue – Not Visible

WIRELINE WINTER (UP TO 2 ABSORBERS)



AECOM Imagine it. Delivered.

Visualisation Type: 4
 Projection: Cylindrical
 Enlargement Factor: 96%
 Paper Size: A1
 Date / Time: 22/01/2021 14:18

Camera: Canon EOS 5D Mk3
 Lens: Sigma 50mm f1.4 HSM
 Horizontal Field of View: 90°
 Direction of View: 283° (W)
 Location: E484110 N411830

Eye level: 5.5m AOD
 Height of Camera: 1.65m
 Distance to Site: 1887m

Note:
 Images to be viewed at a comfortable arm's length.

The Keadby 3 (Carbon Capture Equipped Gas Fired Generating Station) Order
 Viewpoint 5 - PRoW (GUNN179), north-east of Gunness
 Figure 14.22f



PHOTOMONTAGE WINTER (SINGLE ABSORBER)



AECOM Imagine it. Delivered.

Visualisation Type: 4
 Projection: Cylindrical
 Enlargement Factor: 96%
 Paper Size: A1
 Date / Time: 22/01/2021 14:18

Camera: Canon EOS 5D Mk3
 Lens: Sigma 50mm f1.4 HSM
 Horizontal Field of View: 90°
 Direction of View: 283° (W)
 Location: E484110 N411830

Eye level: 5.5m AOD
 Height of Camera: 1.65m
 Distance to Site: 1887m

Note:
 Images to be viewed at a comfortable arm's length.

The Keadby 3 (Carbon Capture Equipped Gas Fired Generating Station) Order
 Viewpoint 5 - PRoW (GUNN179), north-east of Gunness
 Figure 14.22g



PHOTOMONTAGE WINTER K1 REMOVED (SINGLE ABSORBER)



AECOM Imagine it. Delivered.

Visualisation Type: 4
 Projection: Cylindrical
 Enlargement Factor: 96%
 Paper Size: A1
 Date / Time: 22/01/2021 14:18

Camera: Canon EOS 5D Mk3
 Lens: Sigma 50mm f1.4 HSM
 Horizontal Field of View: 90°
 Direction of View: 283° (W)
 Location: E484110 N411830

Eye level: 5.5m AOD
 Height of Camera: 1.65m
 Distance to Site: 1887m

Note:
 Images to be viewed at a comfortable arm's length.

The Keadby 3 (Carbon Capture Equipped Gas Fired Generating Station) Order
 Viewpoint 5 - PRoW (GUNN179), north-east of Gunness
 Figure 14.22h



PHOTOMONTAGE WINTER (UP TO 2 ABSORBERS)



AECOM Imagine it. Delivered.

Visualisation Type: 4
 Projection: Cylindrical
 Enlargement Factor: 96%
 Paper Size: A1
 Date / Time: 22/01/2021 14:18

Camera: Canon EOS 5D Mk3
 Lens: Sigma 50mm f1.4 HSM
 Horizontal Field of View: 90°
 Direction of View: 283° (W)
 Location: E484110 N411830

Eye level: 5.5m AOD
 Height of Camera: 1.65m
 Distance to Site: 1887m

Note:
 Images to be viewed at a comfortable arm's length.

The Keadby 3 (Carbon Capture Equipped Gas Fired Generating Station) Order
 Viewpoint 5 - PRoW (GUNN179), north-east of Gunness
 Figure 14.22i



PHOTOMONTAGE WINTER K1 REMOVED (UP TO 2 ABSORBERS)



AECOM Imagine it. Delivered.

Visualisation Type: 4
 Projection: Cylindrical
 Enlargement Factor: 96%
 Paper Size: A1
 Date / Time: 22/01/2021 14:18

Camera: Canon EOS 5D Mk3
 Lens: Sigma 50mm f1.4 HSM
 Horizontal Field of View: 90°
 Direction of View: 283° (W)
 Location: E484110 N411830

Eye level: 5.5m AOD
 Height of Camera: 1.65m
 Distance to Site: 1887m

Note:
 Images to be viewed at a comfortable arm's length.

The Keadby 3 (Carbon Capture Equipped Gas Fired Generating Station) Order
 Viewpoint 5 - PRoW (GUNN179), north-east of Gunness
 Figure 14.22j



BASELINE SUMMER



AECOM Imagine it. Delivered.

Visualisation Type: 4
 Projection: Cylindrical
 Enlargement Factor: 96%
 Paper Size: A1
 Date / Time: 28/09/2020 11:32

Camera: Canon EOS 5D Mk3
 Lens: Sigma 50mm f1.4 HSM
 Horizontal Field of View: 90°
 Direction of View: 343° (N)
 Location: E483145 N409788

Eye level: 3.6m AOD
 Height of Camera: 1.65m
 Distance to Site: 2090m

Note: Images to be viewed at a comfortable arm's length.

The Keadby 3 (Carbon Capture Equipped Gas Fired Generating Station) Order
 Viewpoint 6 - Trunk Road, Keadby
 Figure 14.23a



KEY:
 Red – Visible
 Blue – Not Visible

WIRELINE SUMMER (SINGLE ABSORBER)



AECOM Imagine it. Delivered.

Visualisation Type: 4
 Projection: Cylindrical
 Enlargement Factor: 96%
 Paper Size: A1
 Date / Time: 28/09/2020 11:32

Camera: Canon EOS 5D Mk3
 Lens: Sigma 50mm f1.4 HSM
 Horizontal Field of View: 90°
 Direction of View: 343° (N)
 Location: E483145 N409788

Eye level: 3.6m AOD
 Height of Camera: 1.65m
 Distance to Site: 2090m

Note:
 Images to be viewed at a comfortable arm's length.

The Keadby 3 (Carbon Capture Equipped Gas Fired Generating Station) Order
 Viewpoint 6 - Trunk Road, Keadby
 Figure 14.23b



KEY:
 Red – Visible
 Blue – Not Visible

WIRELINE SUMMER (UP TO 2 ABSORBERS)



AECOM Imagine it. Delivered.

Visualisation Type: 4
 Projection: Cylindrical
 Enlargement Factor: 96%
 Paper Size: A1
 Date / Time: 28/09/2020 11:32

Camera: Canon EOS 5D Mk3
 Lens: Sigma 50mm f1.4 HSM
 Horizontal Field of View: 90°
 Direction of View: 343° (N)
 Location: E483145 N409788

Eye level: 3.6m AOD
 Height of Camera: 1.65m
 Distance to Site: 2090m

Note:
 Images to be viewed at a comfortable arm's length.

The Keadby 3 (Carbon Capture Equipped Gas Fired Generating Station) Order
 Viewpoint 6 - Trunk Road, Keadby
 Figure 14.23c



BASELINE WINTER



AECOM Imagine it. Delivered.

Visualisation Type: 4
 Projection: Cylindrical
 Enlargement Factor: 96%
 Paper Size: A1
 Date / Time: 22/01/2021 14:43

Camera: Canon EOS 5D Mk3
 Lens: Sigma 50mm f1.4 HSM
 Horizontal Field of View: 90°
 Direction of View: 343° (N)
 Location: E483145 N409788

Eye level: 3.6m AOD
 Height of Camera: 1.65m
 Distance to Site: 2090m

Note: Images to be viewed at a comfortable arm's length.

The Keadby 3 (Carbon Capture Equipped Gas Fired Generating Station) Order
 Viewpoint 6 - Trunk Road, Keadby
 Figure 14.23d



KEY:
 Red – Visible
 Blue – Not Visible

WIRELINE WINTER (SINGLE ABSORBER)



AECOM Imagine it. Delivered.

Visualisation Type: 4
 Projection: Cylindrical
 Enlargement Factor: 96%
 Paper Size: A1
 Date / Time: 22/01/2021 14:43

Camera: Canon EOS 5D Mk3
 Lens: Sigma 50mm f1.4 HSM
 Horizontal Field of View: 90°
 Direction of View: 343° (N)
 Location: E483145 N409788

Eye level: 3.6m AOD
 Height of Camera: 1.65m
 Distance to Site: 2090m

Note:
 Images to be viewed at a comfortable arm's length.

The Keadby 3 (Carbon Capture Equipped Gas Fired Generating Station) Order
 Viewpoint 6 - Trunk Road, Keadby
 Figure 14.23e



KEY:
 Red – Visible
 Blue – Not Visible

WIRELINE WINTER (UP TO 2 ABSORBERS)



AECOM Imagine it. Delivered.

Visualisation Type: 4
 Projection: Cylindrical
 Enlargement Factor: 96%
 Paper Size: A1
 Date / Time: 22/01/2021 14:43

Camera: Canon EOS 5D Mk3
 Lens: Sigma 50mm f1.4 HSM
 Horizontal Field of View: 90°
 Direction of View: 343° (N)
 Location: E483145 N409788

Eye level: 3.6m AOD
 Height of Camera: 1.65m
 Distance to Site: 2090m

Note:
 Images to be viewed at a comfortable arm's length.

The Keadby 3 (Carbon Capture Equipped Gas Fired Generating Station) Order
 Viewpoint 6 - Trunk Road, Keadby
 Figure 14.23f



PHOTOMONTAGE WINTER (SINGLE ABSORBER)



AECOM Imagine it. Delivered.

Visualisation Type: 4
 Projection: Cylindrical
 Enlargement Factor: 96%
 Paper Size: A1
 Date / Time: 22/01/2021 14:43

Camera: Canon EOS 5D Mk3
 Lens: Sigma 50mm f1.4 HSM
 Horizontal Field of View: 90°
 Direction of View: 343° (N)
 Location: E483145 N409788

Eye level: 3.6m AOD
 Height of Camera: 1.65m
 Distance to Site: 2090m

Note: Images to be viewed at a comfortable arm's length.

The Keadby 3 (Carbon Capture Equipped Gas Fired Generating Station) Order
 Viewpoint 6 - Trunk Road, Keadby
 Figure 14.23g



PHOTOMONTAGE WINTER K1 REMOVED (SINGLE ABSORBER)



AECOM Imagine it. Delivered.

Visualisation Type: 4
 Projection: Cylindrical
 Enlargement Factor: 96%
 Paper Size: A1
 Date / Time: 22/01/2021 14:43

Camera: Canon EOS 5D Mk3
 Lens: Sigma 50mm f1.4 HSM
 Horizontal Field of View: 90°
 Direction of View: 343° (N)
 Location: E483145 N409788

Eye level: 3.6m AOD
 Height of Camera: 1.65m
 Distance to Site: 2090m

Note:
 Images to be viewed at a comfortable arm's length.

The Keadby 3 (Carbon Capture Equipped Gas Fired Generating Station) Order
 Viewpoint 6 - Trunk Road, Keadby
 Figure 14.23h



PHOTOMONTAGE WINTER (UP TO 2 ABSORBERS)



AECOM Imagine it. Delivered.

Visualisation Type: 4
 Projection: Cylindrical
 Enlargement Factor: 96%
 Paper Size: A1
 Date / Time: 22/01/2021 14:43

Camera: Canon EOS 5D Mk3
 Lens: Sigma 50mm f1.4 HSM
 Horizontal Field of View: 90°
 Direction of View: 343° (N)
 Location: E483145 N409788

Eye level: 3.6m AOD
 Height of Camera: 1.65m
 Distance to Site: 2090m

Note:
 Images to be viewed at a comfortable arm's length.

The Keadby 3 (Carbon Capture Equipped Gas Fired Generating Station) Order
 Viewpoint 6 - Trunk Road, Keadby
 Figure 14.23i



PHOTOMONTAGE WINTER K1 REMOVED (UP TO 2 ABSORBERS)



AECOM Imagine it. Delivered.

Visualisation Type: 4
 Projection: Cylindrical
 Enlargement Factor: 96%
 Paper Size: A1
 Date / Time: 22/01/2021 14:43

Camera: Canon EOS 5D Mk3
 Lens: Sigma 50mm f1.4 HSM
 Horizontal Field of View: 90°
 Direction of View: 343° (N)
 Location: E483145 N409788

Eye level: 3.6m AOD
 Height of Camera: 1.65m
 Distance to Site: 2090m

Note: Images to be viewed at a comfortable arm's length.

The Keadby 3 (Carbon Capture Equipped Gas Fired Generating Station) Order
 Viewpoint 6 - Trunk Road, Keadby
 Figure 14.23j



AECOM Imagine it. Delivered.

Visualisation Type: 4
 Projection: Cylindrical
 Enlargement Factor: 96%
 Paper Size: A1
 Date / Time: 28/09/2020 14:03

Camera: Canon EOS 5D Mk3
 Lens: Sigma 50mm f1.4 HSM
 Horizontal Field of View: 90°
 Direction of View: 27° (NE)
 Location: E477883 N406997

Eye level: 14.6m AOD
 Height of Camera: 1.65m
 Distance to Site: 6226m

Note:
 Images to be viewed at a comfortable arm's length.

The Keadby 3 (Carbon Capture Equipped Gas Fired Generating Station) Order
 Viewpoint 13 - PROW (BELT30/ BELT 34) Isle of Axholme
 Figure 14.24a



KEY:
 Red – Visible
 Blue – Not Visible

WIRELINE SUMMER (SINGLE ABSORBER)



AECOM Imagine it. Delivered.

Visualisation Type: 4
 Projection: Cylindrical
 Enlargement Factor: 96%
 Paper Size: A1
 Date / Time: 28/09/2020 14:03

Camera:
 Lens: Canon EOS 5D Mk3
 Sigma 50mm f1.4 HSM
 Horizontal Field of View: 90°
 Direction of View: 27° (NE)
 Location: E477883 N406997

Eye level: 14.6m AOD
 Height of Camera: 1.65m
 Distance to Site: 6226m

Note:
 Images to be viewed at a comfortable arm's length.

The Keadby 3 (Carbon Capture Equipped Gas Fired Generating Station) Order
 Viewpoint 13 - PROW (BELT30/ BELT 34) Isle of Axholme
 Figure 14.24b



KEY:
 Red – Visible
 Blue – Not Visible

WIRELINE SUMMER (UP TO 2 ABSORBERS)



AECOM Imagine it. Delivered.

Visualisation Type: 4
 Projection: Cylindrical
 Enlargement Factor: 96%
 Paper Size: A1
 Date / Time: 28/09/2020 14:03

Camera: Canon EOS 5D Mk3
 Lens: Sigma 50mm f1.4 HSM
 Horizontal Field of View: 90°
 Direction of View: 27° (NE)
 Location: E477883 N406997

Eye level: 14.6m AOD
 Height of Camera: 1.65m
 Distance to Site: 6226m

Note:
 Images to be viewed at a comfortable arm's length.

The Keadby 3 (Carbon Capture Equipped Gas Fired Generating Station) Order
 Viewpoint 13 - PROW (BELT30/ BELT 34) Isle of Axholme
 Figure 14.24c



BASELINE WINTER



AECOM Imagine it. Delivered.

Visualisation Type: 4
 Projection: Cylindrical
 Enlargement Factor: 96%
 Paper Size: A1
 Date / Time: 22/01/2021 15:09

Camera: Canon EOS 5D Mk3
 Lens: Sigma 50mm f1.4 HSM
 Horizontal Field of View: 90°
 Direction of View: 27° (NE)
 Location: E477883 N406997

Eye level: 14.6m AOD
 Height of Camera: 1.65m
 Distance to Site: 6226m

Note: Images to be viewed at a comfortable arm's length.

The Keadby 3 (Carbon Capture Equipped Gas Fired Generating Station) Order
 Viewpoint 13 - PROW (BELT30/ BELT 34) Isle of Axholme
 Figure 14.24d



KEY:
 Red – Visible
 Blue – Not Visible

WIRELINE WINTER (SINGLE ABSORBER)



AECOM Imagine it. Delivered.

Visualisation Type: 4
 Projection: Cylindrical
 Enlargement Factor: 96%
 Paper Size: A1
 Date / Time: 22/01/2021 15:09

Camera: Canon EOS 5D Mk3
 Lens: Sigma 50mm f1.4 HSM
 Horizontal Field of View: 90°
 Direction of View: 27° (NE)
 Location: E477883 N406997

Eye level: 14.6m AOD
 Height of Camera: 1.65m
 Distance to Site: 6226m

Note:
 Images to be viewed at a comfortable arm's length.

The Keadby 3 (Carbon Capture Equipped Gas Fired Generating Station) Order
 Viewpoint 13 - PROW (BELT30/ BELT 34) Isle of Axholme
 Figure 14.24e



KEY:
 Red - Visible
 Blue - Not Visible

WIRELINE WINTER (UP TO 2 ABSORBERS)



AECOM Imagine it. Delivered.

Visualisation Type: 4
 Projection: Cylindrical
 Enlargement Factor: 96%
 Paper Size: A1
 Date / Time: 22/01/2021 15:09

Camera: Canon EOS 5D Mk3
 Lens: Sigma 50mm f1.4 HSM
 Horizontal Field of View: 90°
 Direction of View: 27° (NE)
 Location: E477883 N406997

Eye level: 14.6m AOD
 Height of Camera: 1.65m
 Distance to Site: 6226m

Note:
 Images to be viewed at a comfortable arm's length.

The Keadby 3 (Carbon Capture Equipped Gas Fired Generating Station) Order
 Viewpoint 13 - PROW (BELT30/ BELT 34) Isle of Axholme
 Figure 14.24f



PHOTOMONTAGE WINTER (SINGLE ABSORBER)



AECOM Imagine it. Delivered.

Visualisation Type: 4
 Projection: Cylindrical
 Enlargement Factor: 96%
 Paper Size: A1
 Date / Time: 22/01/2021 15:09

Camera: Canon EOS 5D Mk3
 Lens: Sigma 50mm f1.4 HSM
 Horizontal Field of View: 90°
 Direction of View: 27° (NE)
 Location: E477883 N406997

Eye level: 14.6m AOD
 Height of Camera: 1.65m
 Distance to Site: 6226m

Note: Images to be viewed at a comfortable arm's length.

The Keadby 3 (Carbon Capture Equipped Gas Fired Generating Station) Order
 Viewpoint 13 - PROW (BELT30/ BELT 34) Isle of Axholme
 Figure 14.24g



PHOTOMONTAGE WINTER K1 REMOVED (SINGLE ABSORBER)



AECOM Imagine it. Delivered.

Visualisation Type: 4
 Projection: Cylindrical
 Enlargement Factor: 96%
 Paper Size: A1
 Date / Time: 22/01/2021 15:09

Camera: Canon EOS 5D Mk3
 Lens: Sigma 50mm f1.4 HSM
 Horizontal Field of View: 90°
 Direction of View: 27° (NE)
 Location: E477883 N406997

Eye level: 14.6m AOD
 Height of Camera: 1.65m
 Distance to Site: 6226m

Note: Images to be viewed at a comfortable arm's length.

The Keadby 3 (Carbon Capture Equipped Gas Fired Generating Station) Order
 Viewpoint 13 - PROW (BELT30/ BELT 34) Isle of Axholme
 Figure 14.24h



PHOTOMONTAGE WINTER (UP TO 2 ABSORBERS)



AECOM Imagine it. Delivered.

Visualisation Type: 4
 Projection: Cylindrical
 Enlargement Factor: 96%
 Paper Size: A1
 Date / Time: 22/01/2021 15:09

Camera: Canon EOS 5D Mk3
 Lens: Sigma 50mm f1.4 HSM
 Horizontal Field of View: 90°
 Direction of View: 27° (NE)
 Location: E477883 N406997

Eye level: 14.6m AOD
 Height of Camera: 1.65m
 Distance to Site: 6226m

Note: Images to be viewed at a comfortable arm's length.

The Keadby 3 (Carbon Capture Equipped Gas Fired Generating Station) Order
 Viewpoint 13 - PROW (BELT30/ BELT 34) Isle of Axholme
 Figure 14.24i



PHOTOMONTAGE WINTER K1 REMOVED (UP TO 2 ABSORBERS)



AECOM Imagine it. Delivered.

Visualisation Type: 4
 Projection: Cylindrical
 Enlargement Factor: 96%
 Paper Size: A1
 Date / Time: 22/01/2021 15:09

Camera: Canon EOS 5D Mk3
 Lens: Sigma 50mm f1.4 HSM
 Horizontal Field of View: 90°
 Direction of View: 27° (NE)
 Location: E477883 N406997

Eye level: 14.6m AOD
 Height of Camera: 1.65m
 Distance to Site: 6226m

Note: Images to be viewed at a comfortable arm's length.

The Keadby 3 (Carbon Capture Equipped Gas Fired Generating Station) Order
 Viewpoint 13 - PROW (BELT30/ BELT 34) Isle of Axholme
 Figure 14.24j



PROJECT

The Keadby 3 (Carbon Capture Equipped Gas Fired Generating Station) Order

APPLICANT

Keadby Generation Limited

CONSULTANT

AECOM Limited
 2 City Walk
 Leeds
 LS11 9AR
 T: 0113 391 6800
 www.aecom.com

LEGEND

- The Order Limits
- 15km Study Area
- Long List of Other Developments
- SSE
- Other
- Updated Long List of Other Developments for Environmental Statement Addendum

NOTES

Reproduced from Ordnance Survey digital map data © Crown copyright 2022. All rights reserved. Licence number 0100031673.

ISSUE PURPOSE

ENV STATEMENT ADDENDUM

PROJECT NUMBER

60625943

SHEET TITLE

Long list of development initially considered for cumulative impact assessment

SHEET NUMBER

Figure 19.1

